



The wise choice

GC Columns



GC columns

After more than 40 years selling Scharlau HPLC Columns, the Scharlau GC columns range was launched. Scharlab offers a wide range of GC Capillary Columns, with more than 2,500 articles available.

Scharlau GC columns are manufactured in fused silica, according to the highest quality standards. More than 10 stationary phases are available in all dimensions. The quality of these columns is guaranteed by testing each individual column using the Grob Test Mixture that confirms the high efficiency of our products.

Scharlau GC column portfolio includes GC-MS low bleeding, FAST and HT columns. Additionally, Scharlab offers the possibility to customise the column, producing special columns to solve each customer's specific analytical problems.

One of the most complete ranges of analytical columns for GC, GC-MS, FAST-GC and High Temperature GC

Excellent efficiency and inertness; we produce and test each column one-by-one to ensure maximum column-to-column reproducibility and quality

Customised products on request

Support and services for your GC analysis

Alternatives Phases

Scharlau	Phase	USP	Agilent	
SC-1	10 0% Methyl Polysiloxane	G1, G2, G9, G38	HP-1, DB-1, CP-Sil 5 CB	H
SC-1 MS	100% Methyl Polysiloxane	G1, G2, G9, G38	HP-1ms, HP-1ms UI, DB-1ms, DB-1ms UI, VF-1ms, Ultra-1	
SC-1HT	100% Methyl Polysiloxane	G1, G2, G9, G38	DB-1HT	
SC-5	5% Phenyl, 95% Methyl Polysiloxane	G27, G36, G41	HP-5, DB-5, CP-Sil 8 CB	
SC-5 MS	5% Phenyl, 95% Methyl Polysiloxane	G27, G36, G41	HP-5msSV, HP-5ms, HP-5ms UI, DB-5, Ultra-2, CP-Sil 8 CB	
SC-5 HT	5% Phenyl, 95% Methyl Polysiloxane	G27, G36, G41	DB-5ht, VF-5ht	
SC-35	35% Phenyl, 65% Methyl Polysiloxane	G42	HP-35, DB-35	
SC-35 MS	35% Phenyl, 65% Methyl Polysiloxane	G28, G32, G42	DB-35ms, DB35msUI, VF-35ms	
SC-50	50% Phenyl, 50% Methyl Polysiloxane	G3, G17	HP-50+, CP-Sil 24 CB, HP-17, DB-17, DB-17ht, DB-608	
SC-624 MS	6% Cyanopropylphenyl, 94% Methyl Polysiloxane	G43	DB-624, VF-624ms, CP-Select 624 CB	
SC-624	6% Cyanopropylphenyl, 94% Methyl Polysiloxane	G43	DB-1301, DB-624, DB-624UI, VF-1301ms, VF-624ms, CP-1301	
SC-1701	14% Cyanopropylphenyl, 86% Methyl Polysiloxane	G46	DB-1701P, DB-1701, CP-Sil 19 CB, VF-1701ms, VF-1701 Pesticides	
SC-225	25% Cyanopropyl, 25% Phenyl, 50% Methyl Polysiloxane	G7, G19	DB-225ms, CP-Sil 43 CB	
SC-23	50% Cyanopropyl, 50% Methyl Polysiloxane	G8, G48	VF-23ms	
SC-WAX	Polyethylene glycol (PEG)	G14, G15, G16, G20, G39, G47	DB-Wax, HP-INNOWax, CP-Wax 52 CB	
SC-WAX MS	Polyethylene glycol (PEG)	G14, G15, G16, G20, G39, G47	VF-WAX MS	
SC-FFAP	Polyethylene glycol (PEG) Acid Modified	G14, G15, G16, G25, G35, G39	DB-FFAP, HP-FFAP, CP-Wax 58 FFAPCB	
SC-2560	100% Cyanopropyl Polysiloxane	G6, G8, G48	HP-88, CP-Sil 88	

Supelco	Restek	Phenomenex	Machery-Nagel	Alltech	Quadrex
SPB-1	Rtx-1	ZB-1	OPTIMA 1	AT-1, EC-1	007-1
SPB-1, Equity-1	Rxi-1ms	ZB-1, ZB-1ms	OPTIMA 1 MS, OPTIMA 1 MS, Accent	AT-1ms	007-1
	Rxi-1HT	ZB-1HTinferno		AT-1ht	
SPB-5	Rtx-5	ZB-5	OPTIMA 5	EC-5, AT-5	007-5
SPB-5, Equity-5	Rxi-5ms	ZB-5, ZB-5msi	OPTIMA 5, OPTIMA 5 MS	AT-5ms	007-5
	Rxi-5HT	ZB-5HTinferno	OPTIMA 5HT		
SPB-35, SPB-608	Rtx-35	ZB-35		AT-35, AT-35-ms	007-35
	Rxi-35Sil MS	MR2	OPTIMA 35 MS		
SPB-50, SPB-17	Rtx-50, Rxi-17	ZB-50	OPTIMA 17	AT-50	007-17
	Rxi-624Sil MS		OPTIMA 624 LB		
SPB-624	Rtx-1301, Rtx-624	ZB-624	OPTIMA 1301, OPTIMA 624	AT-624, AT-1301	007-1301, 007-624
Equity-1701	Rtx-1701	ZB-1701, ZB-1701P	OPTIMA 1701	AT-1701	007-1701
SPB-225	Rtx-225		OPTIMA 225	AT-225	007-225
SP-2330, SP-2331, SP-2380 SP-2560	Rtx-2330			AT-Silar90	007-23
Supelcowax-10	Rtx-Wax, Stabilwax	ZB-Wax	OPTIMA WAX	AT-WAX, EC-Wax	007-CW
	Stabilwax-MS	ZB-WAXplus	OPTIMA WAXplus	AT-WAXms	
SPB-1000	Stabilwax-DA	ZB-FFAP		AT-1000	007-FFAP
SP-2560, SP-2330	Rtx-2560			AT-Silar	

SC columns



SC-1 Columns

Phase: 100% Methyl Polysiloxane.

Non-polar.

Suitable for all routine analyses.

USP Classification: G1, G2, G9, G38.

EPA Methods / Normatives: EPA 504.1, 505, 551, 606, 612, 8141A/B.

Application areas: suitable for analysis of hydrocarbons, aromatics, pesticides, phenol, herbicides, ketones, drugs of abuse, phthalates esters.

Suitable replacement for: DB-1, HP-1, CP-Sil 5 CB, SPB-1, Rtx-1, ZB-1, BP1, AT-1, 007-1.

Phase	Leng (m)	ID (mm)	Thickness Film (µm)	ART. NO.
SC-1	15	0,25	0,25	SC11521006
SC-1	15	0,25	0,5	SC11521011
SC-1	15	0,25	1	SC11521016
SC-1	15	0,32	0,25	SC11521031
SC-1	15	0,32	1	SC11521046
SC-1	15	0,32	3	SC11521056
SC-1	15	0,32	5	SC11521061
SC-1	15	0,53	0,15	SC11521066
SC-1	15	0,53	0,25	SC11521071
SC-1	15	0,53	0,5	SC11521076
SC-1	15	0,53	1	SC11521081
SC-1	15	0,53	1,5	SC11521086
SC-1	15	0,53	3	SC11521091
SC-1	15	0,53	5	SC11521096
SC-1	25	0,25	0,25	SC12521007
SC-1	25	0,32	1	SC12521047
SC-1	25	0,53	1	SC12521082
SC-1	25	0,53	5	SC12521097
SC-1	30	0,25	0,5	SC13021013
SC-1	30	0,25	1	SC13021018
SC-1	30	0,32	0,25	SC13021033
SC-1	30	0,32	0,32	SC13021099
SC-1	30	0,32	0,5	SC13021043
SC-1	30	0,32	1	SC13021048
SC-1	30	0,32	1,5	SC13021053
SC-1	30	0,32	3	SC13021058
SC-1	30	0,32	5	SC13021063
SC-1	30	0,53	0,25	SC13021073

Phase	Leng (m)	ID (mm)	Thickness Film (µm)	ART. NO.
SC-1	30	0,53	0,5	SC13021078
SC-1	30	0,53	1	SC13021083
SC-1	30	0,53	1,5	SC13021088
SC-1	30	0,53	3	SC13021093
SC-1	30	0,53	5	SC13021098
SC-1	50	0,25	0,25	SC15021009
SC-1	50	0,32	1	SC15021064
SC-1	50	0,32	5	SC15021049
SC-1	50	0,53	5	SC15021099
SC-1	60	0,25	0,25	SC16021010
SC-1	60	0,25	0,5	SC16021015
SC-1	60	0,25	1	SC16021020
SC-1	60	0,32	0,25	SC16021035
SC-1	60	0,32	0,5	SC16021045
SC-1	60	0,32	1	SC16021050
SC-1	60	0,32	1,5	SC16021055
SC-1	60	0,32	3	SC16021060
SC-1	60	0,32	5	SC16021065
SC-1	60	0,53	0,5	SC16021080
SC-1	60	0,53	1	SC16021085
SC-1	60	0,53	1,5	SC16021090
SC-1	60	0,53	3	SC16021095
SC-1	60	0,53	5	SC16021100

SC-5 Columns

Phase: 5% Phenyl / 95% Methyl Polysiloxane.

Excellent general purpose GC column.

Non-polar.

USP Classification: G27, G36, G41.

EPA Methods / Normatives: EPA 611/8110, 604, 606, 607, 608/8081, 609, 612, 613, 615, 619, 622, 8015B, 8041, 8061A, 8082, 8091, 8121, 8141.

Application areas: pesticides, herbicides, drugs of abuse, alkyl naphthalens, haloethers, phenols, chlorinated hydrocarbons, nitrosamines.

Suitable replacement for: DB-5, Rtx-5, HP-5, BP-5, SPB-5, CP-Sil 8CB, VB-5, ZB-5, AT-5, 007-5.

Phase	Leng (m)	ID (mm)	Thickness Film (µm)	ART. NO.
SC-5	15	0,25	0,25	SC51522006
SC-5	15	0,25	0,5	SC51522011

Phase	Leng (m)	ID (mm)	Thickness Film (µm)	ART. NO.
SC-5	15	0,25	1	SC51522016
SC-5	15	0,32	0,25	SC51522031
SC-5	15	0,32	1	SC51522046
SC-5	15	0,53	0,25	SC51522071
SC-5	15	0,53	0,5	SC51522076
SC-5	15	0,53	1	SC51522081
SC-5	15	0,53	1,5	SC51522086
SC-5	15	0,53	3	SC51522091
SC-5	15	0,53	5	SC51522096
SC-5	25	0,25	0,25	SC52522007
SC-5	25	0,32	0,25	SC52522032
SC-5	25	0,32	1	SC52522047
SC-5	25	0,53	5	SC52522097
SC-5	30	0,25	0,5	SC53022008
SC-5	30	0,25	1	SC53022013
SC-5	30	0,25	0,25	SC53022018
SC-5	30	0,32	0,32	SC53022033
SC-5	30	0,32	0,5	SC53022043
SC-5	30	0,32	1	SC53022048
SC-5	30	0,32	1,5	SC53022053
SC-5	30	0,32	3	SC53022058
SC-5	30	0,32	5	SC55022064
SC-5	30	0,53	0,25	SC53022073
SC-5	30	0,53	0,5	SC53022078
SC-5	30	0,53	1	SC53022083
SC-5	30	0,53	1,5	SC53022088
SC-5	30	0,53	3	SC53022093
SC-5	30	0,53	5	SC53022098
SC-5	50	0,25	0,25	SC16021010
SC-5	50	0,32	0,25	SC16021015
SC-5	60	0,32	1	SC16021020
SC-5	50	0,53	5	SC16021035
SC-5	60	0,25	0,25	SC56022010
SC-5	60	0,25	0,5	SC56022015
SC-5	60	0,25	1	SC56022020
SC-5	60	0,32	0,25	SC56022035
SC-5	60	0,32	1	SC56022050
SC-5	60	0,53	0,5	SC56022080
SC-5	60	0,53	1,5	SC56022090
SC-5	60	0,53	3	SC56022095
SC-5	60	0,53	5	SC56022100

SC-35 Columns

Phase: 35% Phenyl / 65% Methyl Polysiloxane.

Excellent general purpose GC column.

Intermediate polarity.

USP Classification: G27, G36, G41.

EPA Methods / Normatives: EPA 513, 528, 604, 606, 610, 613, 625, 1625, 1653, 8100, 8141A/B.

Application areas: alkyl naphthalens, haloethers, phenols, chlorinated hydrocarbons, nitrosamines, pesticides, herbicides, drugs of abuse.

Suitable replacement for: DB-35, HP-35, SPB-35, SPB-608, Rtx-35, ZB-1, 007-11, BPX-35, BPX-608.

Phase	Leng (m)	ID (mm)	Thickness Film (µm)	ART. NO.
SC-5	15	0,25	0,25	SC35159001
SC-5	30	0,25	0,25	SC35309002
SC-5	30	0,32	0,25	SC35309005
SC-5	30	0,32	0,5	SC35309006
SC-5	30	0,53	0,5	SC35309009
SC-5	30	0,53	1	SC35309010
SC-5	60	0,53	0,25	SC35609003

SC-50 Columns

Phase: 50% Phenyl / 50% Methyl Polysiloxane.

Excellent general purpose GC column.

Mid to High polarity.

USP Classification: G3, G17.

EPA Methods / Normatives: EPA 604, 608, 619, 8060, 8081.

Application areas: drug screening, steroids, triazines/herbicides and a variety of pharmaceutical applications.

Suitable replacement for: DB-17, HP-17, CP-Sil 24 CB, SPB-50, Rxi-17, ZB-50, BPX50, 007-17, AT-50.

Phase	Leng (m)	ID (mm)	Thickness Film (µm)	ART. NO.
SC-50	15	0,25	0,25	SC50156006
SC-50	15	0,25	0,25	SC50156011
SC-50	15	0,32	0,25	SC50156026
SC-50	15	0,32	0,5	SC50156061
SC-5	30	0,25	0,15	SC50306003
SC-5	30	0,25	0,25	SC50306008
SC-5	30	0,25	0,5	SC50306013
SC-5	30	0,32	0,25	SC50306028
SC-5	30	0,53	0,25	SC50306053
SC-5	30	0,53	1	SC50306063
SC-5	60	0,25	0,25	SC50606010
SC-5	60	0,32	0,25	SC50606030
SC-5	60	0,53	1	SC50606065

SC-624 Columns

Phase: 6% Cyanopropylphenyl 94% Methyl Polysiloxane.

Excellent general purpose GC column.

Intermediate polarity.

USP Classification: G43, 467 (OVIs).

EPA Methods / Normatives: EPA 501.3, 502.1, 502.2, 503.1, 504.1, 524.2, 601, 602, 603, 624, 1624, 8010B, 8021B, 8030A, 8260B.

Application areas: EPA method 624, chlorinated hydrocarbons, drinking water volatiles, solvents.

Suitable replacement for: DB-624, CP-1301, HP-624, Rtx-624, Rtx-1301, ZB-624, BP624, 007-624, 007-1301, AT-624.

Phase	Leng (m)	ID (mm)	Thickness Film (µm)	ART. NO.
SC-624	15	0,53	3	SC61526016
SC-624	30	0,25	1,4	SC63026003
SC-624	30	0,32	1,8	SC63026008
SC-624	30	0,53	3	SC63026018
SC-624	60	0,25	1,4	SC66026005
SC-624	60	0,32	1,8	SC66026010
SC-624	60	0,53	3	SC66026020

SC-1701 Columns

Phase: 14% Cyanopropylphenyl 86% Methyl Polysiloxane.

Excellent general purpose GC column.

Intermediate polarity.

USP Classification: G46.

EPA Methods / Normatives: EPA 513, 515.2, 552.2, 607, 619, 622, 8091, 8121.

Application areas: organophosphorus pesticides, food packaging residual solvents.

Suitable replacement for: DB-1701, VF-1701, VF-1701MS, CP-Sil 19CB, Rtx-1701, ZB-1701, BP10, 007-1701, AT-1701.

Phase	Leng (m)	ID (mm)	Thickness Film (µm)	ART. NO.
SC-1701	15	0,25	0,25	SC17157006
SC-1701	15	0,25	1	SC17157016
SC-1701	15	0,32	0,25	SC17157031
SC-1701	15	0,32	1	SC17157046
SC-1701	15	0,32	1,5	SC17157051
SC-1701	15	0,53	1	SC17157071
SC-1701	30	0,25	0,25	SC17307008
SC-1701	30	0,25	1	SC17307018
SC-1701	30	0,32	0,25	SC17307033
SC-1701	30	0,32	1	SC17307048
SC-1701	30	0,32	1,5	SC17307053
SC-1701	30	0,53	0,25	SC17307063
SC-1701	30	0,53	0,5	SC17307068
SC-1701	30	0,53	1	SC17307073
SC-1701	30	0,53	1,5	SC17307078

Phase	Leng (m)	ID (mm)	Thickness Film (µm)	ART. NO.
SC-1701	60	0,25	0,25	SC17607010
SC-1701	60	0,25	0,5	SC17607015
SC-1701	60	0,25	1	SC17607020
SC-1701	60	0,32	0,25	SC17607035
SC-1701	60	0,32	1	SC17607050
SC-1701	60	0,32	1,5	SC17607055
SC-1701	60	0,53	1	SC17607075

SC-225 Columns

Phase: 25% Cyanopropyl, 25% phenyl, 50% Methyl Polysiloxane.

Excellent general purpose GC column.

Mid to High polarity.

USP Classification: G7, G19.

Application areas: organophosphorus pesticides, food packaging residual solvents.

Suitable replacement for: DB-225, HP-225, CP-Sil 43CB, SPB-225, Rtx-225, BP225, 007-225, AT-225.

Phase	Leng (m)	ID (mm)	Thickness Film (µm)	ART. NO.
SC-225	15	0,25	0,25	SC21528006
SC-225	15	0,32	1	SC21528046
SC-225	15	0,32	0,25	SC21528061
SC-225	15	0,53	1	SC21528071
SC-225	30	0,25	0,15	SC23028003
SC-225	30	0,25	0,25	SC23028008
SC-225	30	0,32	0,25	SC26028046
SC-225	30	0,32	1	SC26028047
SC-225	30	0,53	0,25	SC26028048
SC-225	30	0,53	1	SC26028049
SC-225	60	0,32	1	SC26028050

SC-23 Columns

Phase: 50% Cyanopropyl, 50% Methyl Polysiloxane.

Excellent general purpose GC column.

Mid to High polarity.

USP Classification: G8.

Application areas: organophosphorus pesticides, food packaging residual solvents.

Suitable replacement for: VF-23MS, DB-23, Silar-5, Rtx-2330, SP-2330.

Phase	Leng (m)	ID (mm)	Thickness Film (µm)	ART. NO.
SC-225	30	0,25	0,25	SC33024003
SC-225	30	0,32	0,25	SC33024008
SC-225	30	0,53	0,25	SC33024013
SC-225	60	0,25	0,25	SC36024005
SC-225	60	0,32	0,25	SC36024010

SC-WAX Columns

Phase: Polyethylene Glycol (PEG).

Industry standard wax column.

Polar phase.

Cross-linked for stability and washing.

USP Classification: G14, G15, G16, G20, G39, G47, USP 467 (OVIs).

EPA Methods / Normatives: EPA 602, 603, 619, 8121.

Application areas: purgeable aromatics (EPA Method 602), Dimethylanilines, FAMEs -C4-C18, FAMEs C6-C24, nitrosoamines, herbicides, triazines (EPA Method 619).

Suitable replacement for: VF-23MS, DB-23, Silar-5, Rtx-2330, SP-2330.

Phase	Leng (m)	ID (mm)	Thickness Film (µm)	ART. NO.
SC-WAX	15	0,25	0,25	SCW1523006
SC-WAX	15	0,25	0,5	SCW1523011
SC-WAX	15	0,32	0,25	SCW1523026
SC-WAX	15	0,32	0,5	SCW1523036
SC-WAX	15	0,53	1	SCW1523061
SC-WAX	30	0,25	0,15	SCW3023003
SC-WAX	30	0,25	0,25	SCW3023008
SC-WAX	30	0,25	0,5	SCW3023013
SC-WAX	30	0,32	0,15	SCW3023023
SC-WAX	30	0,32	0,25	SCW3023028
SC-WAX	30	0,32	0,5	SCW3023038
SC-WAX	30	0,53	0,25	SCW3023053
SC-WAX	30	0,53	0,5	SCW3023058
SC-WAX	30	0,53	1	SCW3023063
SC-WAX	60	0,25	0,15	SCW6023005
SC-WAX	60	0,25	0,25	SCW6023010
SC-WAX	60	0,25	0,5	SCW6023015
SC-WAX	60	0,32	0,25	SCW6023030
SC-WAX	60	0,32	0,5	SCW6023040
SC-WAX	60	0,53	1	SCW6023065

SC-FFAP Columns

Phase: Polyethylene glycol (PEG) Acid Modified.

Polar Phase.

Ideal for low molecular weight acids.

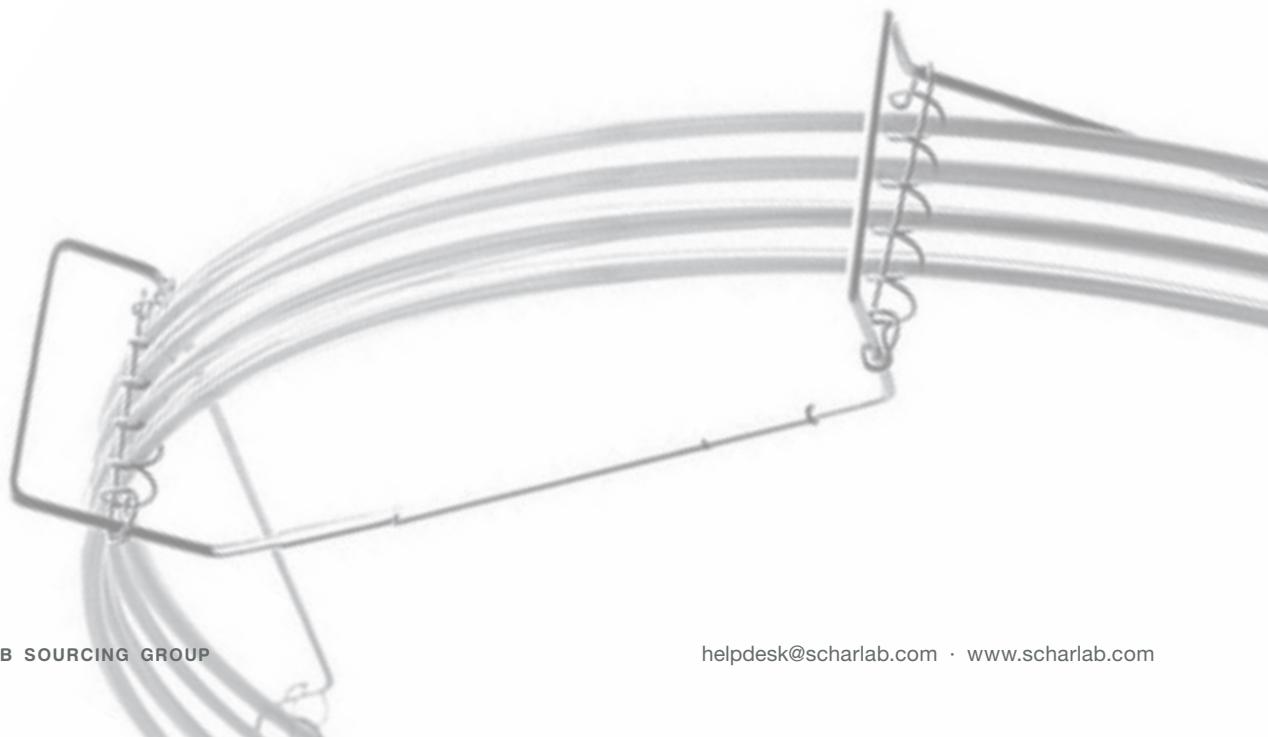
USP Classification: G14, G15, G16, G25, G35, G39.

Application areas: Volatile free acids, organic acids, amides, flavors and fragrances compounds.

Suitable replacement for: DB-FFPA, HP-FFPA, CP-Wax 58CB, SPB-1000, Stabilwax-DA,

ZB-FFAP, BP21, 007-FFAP, AT-1000.

Phase	Leng (m)	ID (mm)	Thickness Film (µm)	ART. NO.
SC-FFAP	15	0,25	0,25	SCF1525006
SC-FFAP	15	0,32	0,25	SCF1525026
SC-FFAP	15	0,53	0,5	SCF1525056
SC-FFAP	15	0,53	1	SCF1525061
SC-FFAP	25	0,32	0,5	SCF2525037
SC-FFAP	30	0,25	0,25	SCF3025008
SC-FFAP	30	0,25	0,5	SCF3025013
SC-FFAP	30	0,32	0,25	SCF3025028
SC-FFAP	30	0,32	0,5	SCF3025038
SC-FFAP	30	0,32	1	SCF3025043
SC-FFAP	30	0,53	0,25	SCF3025053
SC-FFAP	30	0,53	0,5	SCF3025058
SC-FFAP	30	0,53	1	SCF3025063
SC-FFAP	50	0,32	0,5	SCF5025039
SC-FFAP	60	0,25	0,25	SCF6025010
SC-FFAP	60	0,25	0,5	SCF6025015
SC-FFAP	60	0,32	0,25	SCF6025030
SC-FFAP	60	0,32	0,5	SCF6025040
SC-FFAP	60	0,32	1	SCF6025045
SC-FFAP	60	0,53	1	SCF6025065



SCMS columns



SCMS-1 Columns

Composition: 100% Methyl Polysiloxane.

Non-polar.

USP classification: G1, G2, G9, G38.

EPA methods: EPA 504.1, 505, 606.

Alternative to: AT™-1 ms, BPX™-1, CP-Sil™ 5 CB ms, DB™-1 ms, Equity™-1, HP™-1 ms, Rtx™-1 ms, SPB™-1, ZB™-1 ms.

Phase	Leng (m)	ID (mm)	Thickness Film (µm)	ART. NO.
SC-1MS	10	0,18	0,18	SCMS110001
SC-1MS	10	0,18	0,2	SCMS110006
SC-1MS	10	0,18	0,4	SCMS110014
SC-1MS	10	0,2	0,1	SCMS110019
SC-1MS	10	0,2	0,2	SCMS110024
SC-1MS	10	0,2	0,4	SCMS110034
SC-1MS	10	0,2	1	SCMS110039
SC-1MS	10	0,25	0,25	SCMS110048
SC-1MS	10	0,25	0,5	SCMS110054
SC-1MS	10	0,25	1	SCMS110060
SC-1MS	10	0,32	0,1	SCMS110066
SC-1MS	10	0,32	0,25	SCMS110072
SC-1MS	10	0,32	0,5	SCMS110078
SC-1MS	10	0,32	1	SCMS110084
SC-1MS	10	0,32	1,5	SCMS110090
SC-1MS	10	0,53	0,1	SCMS110096
SC-1MS	10	0,53	0,5	SCMS110103
SC-1MS	10	0,53	1	SCMS110108
SC-1MS	10	0,53	1,5	SCMS110114
SC-1MS	15	0,25	0,1	SCMS110044
SC-1MS	15	0,25	0,25	SCMS110049
SC-1MS	15	0,25	0,5	SCMS110055
SC-1MS	15	0,25	1	SCMS110061
SC-1MS	15	0,32	0,1	SCMS110067
SC-1MS	15	0,32	0,25	SCMS110073
SC-1MS	15	0,32	0,5	SCMS110079
SC-1MS	15	0,32	1	SCMS110085
SC-1MS	15	0,32	1,5	SCMS110091
SC-1MS	15	0,53	0,1	SCMS110097
SC-1MS	15	0,53	0,25	SCMS110099
SC-1MS	15	0,53	0,5	SCMS110104

Phase	Leng (m)	ID (mm)	Thickness Film (µm)	ART. NO.
SC-1MS	15	0,53	1	SCMS110109
SC-1MS	15	0,53	1,5	SCMS110115
SC-1MS	20	0,18	0,18	SCMS110002
SC-1MS	20	0,18	0,2	SCMS110007
SC-1MS	20	0,18	0,36	SCMS110011
SC-1MS	20	0,18	0,4	SCMS110015
SC-1MS	20	0,2	0,1	SCMS110020
SC-1MS	20	0,2	0,2	SCMS110025
SC-1MS	20	0,2	0,4	SCMS110035
SC-1MS	20	0,2	1	SCMS110040
SC-1MS	30	0,2	0,33	SCMS110031
SC-1MS	30	0,25	0,1	SCMS110045
SC-1MS	30	0,25	0,25	SCMS110050
SC-1MS	30	0,25	0,25	SCMS110051
SC-1MS	30	0,25	0,5	SCMS110056
SC-1MS	30	0,25	1	SCMS110062
SC-1MS	30	0,32	0,1	SCMS110068
SC-1MS	30	0,32	0,25	SCMS110074
SC-1MS	30	0,32	0,5	SCMS110080
SC-1MS	30	0,32	1	SCMS110086
SC-1MS	30	0,32	1,5	SCMS110092
SC-1MS	30	0,53	0,1	SCMS110098
SC-1MS	30	0,53	0,25	SCMS110100
SC-1MS	30	0,53	0,5	SCMS110105
SC-1MS	30	0,53	1	SCMS110110
SC-1MS	30	0,53	1,5	SCMS110116
SC-1MS	40	0,18	0,18	SCMS110003
SC-1MS	40	0,18	0,2	SCMS110008
SC-1MS	40	0,18	0,36	SCMS110012
SC-1MS	40	0,18	0,4	SCMS110016
SC-1MS	40	0,2	0,1	SCMS110021
SC-1MS	40	0,2	0,2	SCMS110026
SC-1MS	40	0,2	0,4	SCMS110036
SC-1MS	40	0,2	1	SCMS110041
SC-1MS	50	0,18	0,18	SCMS110004
SC-1MS	50	0,18	0,2	SCMS110009
SC-1MS	50	0,18	0,4	SCMS110017
SC-1MS	50	0,2	0,1	SCMS110022

Phase	Leng (m)	ID (mm)	Thickness Film (µm)	ART. NO.
SC-1MS	50	0,2	0,2	SCMS110027
SC-1MS	50	0,2	0,33	SCMS110032
SC-1MS	50	0,2	0,4	SCMS110037
SC-1MS	50	0,2	1	SCMS110042
SC-1MS	50	0,25	0,1	SCMS110046
SC-1MS	50	0,25	0,5	SCMS110057
SC-1MS	50	0,25	1	SCMS110063
SC-1MS	50	0,32	0,1	SCMS110069
SC-1MS	50	0,32	0,25	SCMS110075
SC-1MS	50	0,32	0,5	SCMS110081
SC-1MS	50	0,32	1	SCMS110087
SC-1MS	50	0,32	1,5	SCMS110093
SC-1MS	50	0,53	0,25	SCMS110101
SC-1MS	50	0,53	0,5	SCMS110106
SC-1MS	50	0,53	1	SCMS110111
SC-1MS	50	0,53	1,5	SCMS110117
SC-1MS	60	0,18	0,18	SCMS110005
SC-1MS	60	0,18	0,2	SCMS110010
SC-1MS	60	0,18	0,36	SCMS110013
SC-1MS	60	0,18	0,4	SCMS110018
SC-1MS	60	0,2	0,1	SCMS110023
SC-1MS	60	0,2	0,2	SCMS110028
SC-1MS	60	0,2	0,33	SCMS110033
SC-1MS	60	0,2	0,4	SCMS110038
SC-1MS	60	0,2	1	SCMS110043
SC-1MS	60	0,25	0,1	SCMS110047
SC-1MS	60	0,25	0,25	SCMS110052
SC-1MS	60	0,25	0,5	SCMS110058
SC-1MS	60	0,25	1	SCMS110064
SC-1MS	60	0,32	0,1	SCMS110070
SC-1MS	60	0,32	0,25	SCMS110076
SC-1MS	60	0,32	0,5	SCMS110082
SC-1MS	60	0,32	1	SCMS110088
SC-1MS	60	0,32	1,5	SCMS110094
SC-1MS	60	0,53	0,25	SCMS110102
SC-1MS	60	0,53	0,5	SCMS110107
SC-1MS	60	0,53	1	SCMS110112
SC-1MS	60	0,53	1,5	SCMS110118
SC-1MS	75	0,53	1	SCMS110113
SC-1MS	75	0,53	1,5	SCMS110119
SC-1MS	105	0,25	0,25	SCMS110053
SC-1MS	105	0,25	0,5	SCMS110059
SC-1MS	105	0,25	1	SCMS110065
SC-1MS	105	0,32	0,1	SCMS110071
SC-1MS	105	0,32	0,25	SCMS110077
SC-1MS	105	0,32	0,5	SCMS110083
SC-1MS	105	0,32	1	SCMS110089
SC-1MS	105	0,32	1,5	SCMS110095

SC-17 MS Columns

Composition: 50% Phenyl, 50% Methyl Polysiloxane.

Mid to high polarity.

USP classification: G3, G17.

Alternative to: DB™-17 ms, Rtx™-17 Sil ms.

Phase	Leng (m)	ID (mm)	Thickness Film (µm)	ART. NO.
SC-17MS	10	0,18	0,18	SCMS170001
SC-17MS	10	0,18	0,2	SCMS170006
SC-17MS	10	0,18	0,4	SCMS170014
SC-17MS	10	0,2	0,1	SCMS170019
SC-17MS	10	0,2	0,2	SCMS170024
SC-17MS	10	0,2	0,4	SCMS170034
SC-17MS	10	0,2	1	SCMS170039
SC-17MS	10	0,25	0,25	SCMS170048
SC-17MS	10	0,25	0,5	SCMS170054
SC-17MS	10	0,25	1	SCMS170060
SC-17MS	10	0,32	0,1	SCMS170066
SC-17MS	10	0,32	0,25	SCMS170072
SC-17MS	10	0,32	0,5	SCMS170078
SC-17MS	10	0,32	1	SCMS170084
SC-17MS	10	0,32	1,5	SCMS170090
SC-17MS	10	0,53	0,1	SCMS170096
SC-17MS	10	0,53	0,5	SCMS170103
SC-17MS	10	0,53	1	SCMS170108
SC-17MS	10	0,53	1,5	SCMS170115
SC-17MS	12	0,2	0,33	SCMS170029
SC-17MS	15	0,25	0,1	SCMS170044
SC-17MS	15	0,25	0,25	SCMS170049
SC-17MS	15	0,25	0,5	SCMS170055
SC-17MS	15	0,25	1	SCMS170061
SC-17MS	15	0,32	0,1	SCMS170067
SC-17MS	15	0,32	0,25	SCMS170073
SC-17MS	15	0,32	0,5	SCMS170079
SC-17MS	15	0,32	1	SCMS170085
SC-17MS	15	0,32	1,5	SCMS170091
SC-17MS	15	0,53	0,1	SCMS170097
SC-17MS	15	0,53	0,25	SCMS170099
SC-17MS	15	0,53	0,5	SCMS170104
SC-17MS	15	0,53	1	SCMS170109
SC-17MS	15	0,53	1,5	SCMS170116
SC-17MS	20	0,18	0,18	SCMS170002
SC-17MS	20	0,18	0,2	SCMS170007
SC-17MS	20	0,18	0,36	SCMS170011
SC-17MS	20	0,18	0,4	SCMS170015
SC-17MS	20	0,2	0,1	SCMS170020
SC-17MS	20	0,2	0,2	SCMS170025
SC-17MS	20	0,2	0,4	SCMS170035
SC-17MS	20	0,2	1	SCMS170040

Phase	Leng (m)	ID (mm)	Thickness Film (µm)	ART. NO.
SC-17MS	25	0,2	0,33	SCMS170030
SC-17MS	30	0,2	0,33	SCMS170031
SC-17MS	30	0,25	0,1	SCMS170045
SC-17MS	30	0,25	0,25	SCMS170050
SC-17MS	30	0,25	0,5	SCMS170056
SC-17MS	30	0,25	1	SCMS170062
SC-17MS	30	0,32	0,1	SCMS170068
SC-17MS	30	0,32	0,25	SCMS170074
SC-17MS	30	0,32	0,5	SCMS170080
SC-17MS	30	0,32	1	SCMS170086
SC-17MS	30	0,32	1,5	SCMS170092
SC-17MS	30	0,53	0,1	SCMS170098
SC-17MS	30	0,53	0,25	SCMS170100
SC-17MS	30	0,53	0,5	SCMS170105
SC-17MS	30	0,53	1	SCMS170110
SC-17MS	30	0,53	1,5	SCMS170117
SC-17MS	40	0,18	0,18	SCMS170003
SC-17MS	40	0,18	0,2	SCMS170008
SC-17MS	40	0,18	0,36	SCMS170012
SC-17MS	40	0,18	0,4	SCMS170016
SC-17MS	40	0,2	0,1	SCMS170021
SC-17MS	40	0,2	0,2	SCMS170026
SC-17MS	40	0,2	0,4	SCMS170036
SC-17MS	40	0,2	1	SCMS170041
SC-17MS	50	0,18	0,18	SCMS170004
SC-17MS	50	0,18	0,2	SCMS170009
SC-17MS	50	0,18	0,4	SCMS170017
SC-17MS	50	0,2	0,1	SCMS170022
SC-17MS	50	0,2	0,2	SCMS170027
SC-17MS	50	0,2	0,33	SCMS170032
SC-17MS	50	0,2	0,4	SCMS170037
SC-17MS	50	0,2	1	SCMS170042
SC-17MS	50	0,25	0,1	SCMS170046
SC-17MS	50	0,25	0,25	SCMS170051
SC-17MS	50	0,25	0,5	SCMS170057
SC-17MS	50	0,25	1	SCMS170063
SC-17MS	50	0,32	0,1	SCMS170069
SC-17MS	50	0,32	0,25	SCMS170075

Phase	Leng (m)	ID (mm)	Thickness Film (µm)	ART. NO.
SC-17MS	50	0,32	0,5	SCMS170081
SC-17MS	50	0,32	1	SCMS170087
SC-17MS	50	0,32	1,5	SCMS170093
SC-17MS	50	0,53	0,25	SCMS170101
SC-17MS	50	0,53	0,5	SCMS170106
SC-17MS	50	0,53	1	SCMS170111
SC-17MS	50	0,53	1,5	SCMS170118
SC-17MS	60	0,18	0,18	SCMS170005
SC-17MS	60	0,18	0,2	SCMS170010
SC-17MS	60	0,18	0,36	SCMS170013
SC-17MS	60	0,18	0,4	SCMS170018
SC-17MS	60	0,2	0,1	SCMS170023
SC-17MS	60	0,2	0,2	SCMS170028
SC-17MS	60	0,2	0,33	SCMS170033
SC-17MS	60	0,2	0,4	SCMS170038
SC-17MS	60	0,2	1	SCMS170043
SC-17MS	60	0,25	0,1	SCMS170047
SC-17MS	60	0,25	0,25	SCMS170052
SC-17MS	60	0,25	0,5	SCMS170058
SC-17MS	60	0,25	1	SCMS170064
SC-17MS	60	0,32	0,1	SCMS170070
SC-17MS	60	0,32	0,25	SCMS170076
SC-17MS	60	0,32	0,5	SCMS170082
SC-17MS	60	0,32	1	SCMS170088
SC-17MS	60	0,32	1,5	SCMS170094
SC-17MS	60	0,53	0,25	SCMS170102
SC-17MS	60	0,53	0,5	SCMS170107
SC-17MS	60	0,53	1	SCMS170113
SC-17MS	60	0,53	1,5	SCMS170119
SC-17MS	75	0,53	1	SCMS170114
SC-17MS	75	0,53	1,5	SCMS170120
SC-17MS	105	0,25	0,25	SCMS170053
SC-17MS	105	0,25	0,5	SCMS170059
SC-17MS	105	0,25	1	SCMS170065
SC-17MS	105	0,32	0,1	SCMS170071
SC-17MS	105	0,32	0,25	SCMS170077
SC-17MS	105	0,32	0,5	SCMS170083
SC-17MS	105	0,32	1	SCMS170089
SC-17MS	105	0,32	1,5	SCMS170095

SC-225 MS Columns

Composition: 25% Cyanopropyl, 25% Phenyl, 50% Methyl Polysiloxane.

Mid to high polarity.

USP classification: G7, G19.

Phase	Leng (m)	ID (mm)	Thickness Film (µm)	ART. NO.
SC-225MS	10	0,18	0,18	SCMS225001
SC-225MS	10	0,2	0,1	SCMS225006
SC-225MS	10	0,2	0,2	SCMS225011
SC-225MS	10	0,25	0,25	SCMS225020
SC-225MS	10	0,32	0,1	SCMS225026
SC-225MS	10	0,32	0,25	SCMS225032
SC-225MS	10	0,53	0,1	SCMS225038
SC-225MS	15	0,25	0,1	SCMS225016
SC-225MS	15	0,25	0,25	SCMS225021
SC-225MS	15	0,32	0,1	SCMS225027
SC-225MS	15	0,32	0,25	SCMS225033
SC-225MS	15	0,53	0,1	SCMS225039
SC-225MS	15	0,53	0,25	SCMS225041
SC-225MS	20	0,18	0,18	SCMS225002
SC-225MS	20	0,2	0,1	SCMS225007
SC-225MS	20	0,2	0,2	SCMS225012
SC-225MS	30	0,25	0,1	SCMS225017
SC-225MS	30	0,25	0,25	SCMS225022
SC-225MS	30	0,32	0,1	SCMS225028
SC-225MS	30	0,32	0,25	SCMS225034
SC-225MS	30	0,53	0,1	SCMS225040
SC-225MS	30	0,53	0,25	SCMS225042
SC-225MS	40	0,18	0,18	SCMS225003
SC-225MS	40	0,2	0,1	SCMS225008
SC-225MS	40	0,2	0,2	SCMS225013
SC-225MS	50	0,18	0,18	SCMS225004
SC-225MS	50	0,2	0,1	SCMS225009
SC-225MS	50	0,2	0,2	SCMS225014
SC-225MS	50	0,25	0,1	SCMS225018
SC-225MS	50	0,25	0,25	SCMS225023
SC-225MS	50	0,32	0,1	SCMS225029
SC-225MS	50	0,32	0,25	SCMS225035
SC-225MS	50	0,53	0,25	SCMS225043
SC-225MS	60	0,18	0,18	SCMS225005
SC-225MS	60	0,2	0,1	SCMS225010
SC-225MS	60	0,2	0,2	SCMS225015
SC-225MS	60	0,25	0,1	SCMS225019
SC-225MS	60	0,25	0,25	SCMS225024
SC-225MS	60	0,32	0,1	SCMS225030
SC-225MS	60	0,32	0,25	SCMS225036
SC-225MS	60	0,53	0,25	SCMS225044

Phase	Leng (m)	ID (mm)	Thickness Film (µm)	ART. NO.
SC-225MS	105	0,25	0,25	SCMS225025
SC-225MS	105	0,32	0,1	SCMS225031
SC-225MS	105	0,32	0,25	SCMS225037

SC-35 MS Columns

Composition: 5% Phenyl, 65% Methyl Polysiloxane.

USP classification: G28, G32, G42.

Alternative to: DB™-35 ms, Rtx™-35 Sil ms, MR2, BPX™-35, BPX™-608.

Phase	Leng (m)	ID (mm)	Thickness Film (µm)	ART. NO.
SC-35MS	10	0,18	0,18	SCMS350001
SC-35MS	10	0,18	0,2	SCMS350006
SC-35MS	10	0,18	0,4	SCMS350014
SC-35MS	10	0,2	0,1	SCMS350019
SC-35MS	10	0,2	0,2	SCMS350024
SC-35MS	10	0,2	0,4	SCMS350034
SC-35MS	10	0,2	1	SCMS350039
SC-35MS	10	0,25	0,25	SCMS350048
SC-35MS	10	0,25	0,5	SCMS350054
SC-35MS	10	0,25	1	SCMS350060
SC-35MS	10	0,32	0,1	SCMS350066
SC-35MS	10	0,32	0,25	SCMS350072
SC-35MS	10	0,32	0,5	SCMS350078
SC-35MS	10	0,32	1	SCMS350084
SC-35MS	10	0,32	1,5	SCMS350090
SC-35MS	10	0,53	0,1	SCMS350096
SC-35MS	10	0,53	0,5	SCMS350103
SC-35MS	10	0,53	1	SCMS350108
SC-35MS	10	0,53	1,5	SCMS350115
SC-35MS	12	0,2	0,33	SCMS350029
SC-35MS	15	0,25	0,1	SCMS350044
SC-35MS	15	0,25	0,25	SCMS350049
SC-35MS	15	0,25	0,5	SCMS350055
SC-35MS	15	0,25	1	SCMS350061
SC-35MS	15	0,32	0,1	SCMS350067
SC-35MS	15	0,32	0,25	SCMS350073
SC-35MS	15	0,32	0,5	SCMS350079
SC-35MS	15	0,32	1	SCMS350085
SC-35MS	15	0,32	1,5	SCMS350091
SC-35MS	15	0,53	0,1	SCMS350097
SC-35MS	15	0,53	0,25	SCMS350099
SC-35MS	15	0,53	0,5	SCMS350104
SC-35MS	15	0,53	1	SCMS350109
SC-35MS	15	0,53	1,5	SCMS350116

Phase	Leng (m)	ID (mm)	Thickness Film (µm)	ART. NO.
SC-35MS	20	0,18	0,18	SCMS350002
SC-35MS	20	0,18	0,2	SCMS350007
SC-35MS	20	0,18	0,36	SCMS350011
SC-35MS	20	0,18	0,4	SCMS350015
SC-35MS	20	0,22	0,1	SCMS350020
SC-35MS	20	0,22	0,2	SCMS350025
SC-35MS	20	0,22	0,4	SCMS350035
SC-35MS	20	0,22	1	SCMS350040
SC-35MS	25	0,2	1	SCMS350030
SC-35MS	30	0,2	0,33	SCMS350031
SC-35MS	30	0,25	0,1	SCMS350045
SC-35MS	30	0,25	0,15	SC3M309502
SC-35MS	30	0,25	0,25	SCMS350050
SC-35MS	30	0,25	0,5	SCMS350056
SC-35MS	30	0,25	1	SCMS350062
SC-35MS	30	0,32	0,1	SCMS350068
SC-35MS	30	0,32	0,25	SCMS350074
SC-35MS	30	0,32	0,5	SCMS350080
SC-35MS	30	0,32	1	SCMS350086
SC-35MS	30	0,32	1,5	SCMS350092
SC-35MS	30	0,53	0,1	SCMS350098
SC-35MS	30	0,53	0,25	SCMS350100
SC-35MS	30	0,53	0,5	SCMS350105
SC-35MS	30	0,53	1	SCMS350110
SC-35MS	30	0,53	1,5	SCMS350117
SC-35MS	30	0,53	3	SCMS350121
SC-35MS	40	0,18	0,18	SCMS350003
SC-35MS	40	0,18	0,2	SCMS350008
SC-35MS	40	0,18	0,36	SCMS350012
SC-35MS	40	0,18	0,4	SCMS350016
SC-35MS	40	0,22	0,1	SCMS350021
SC-35MS	40	0,22	0,2	SCMS350026
SC-35MS	40	0,22	0,4	SCMS350036
SC-35MS	40	0,22	1	SCMS350041
SC-35MS	50	0,18	0,18	SCMS350004
SC-35MS	50	0,18	0,2	SCMS350009
SC-35MS	50	0,18	0,4	SCMS350017
SC-35MS	50	0,2	0,1	SCMS350022
SC-35MS	50	0,2	0,2	SCMS350027
SC-35MS	50	0,2	0,33	SCMS350032
SC-35MS	50	0,2	0,4	SCMS350037

Phase	Leng (m)	ID (mm)	Thickness Film (µm)	ART. NO.
SC-35MS	50	0,2	1	SCMS350042
SC-35MS	50	0,25	0,1	SCMS350046
SC-35MS	50	0,25	0,25	SCMS350051
SC-35MS	50	0,25	0,5	SCMS350057
SC-35MS	50	0,25	1	SCMS350063
SC-35MS	50	0,32	0,1	SCMS350069
SC-35MS	50	0,32	0,25	SCMS350075
SC-35MS	50	0,32	0,5	SCMS350081
SC-35MS	50	0,32	1	SCMS350087
SC-35MS	50	0,32	1,5	SCMS350093
SC-35MS	50	0,53	0,25	SCMS350101
SC-35MS	50	0,53	0,5	SCMS350106
SC-35MS	50	0,53	1	SCMS350111
SC-35MS	50	0,53	1,5	SCMS350118
SC-35MS	60	0,18	0,18	SCMS350005
SC-35MS	60	0,18	0,2	SCMS350010
SC-35MS	60	0,18	0,36	SCMS350013
SC-35MS	60	0,18	0,4	SCMS350018
SC-35MS	60	0,18	0,1	SCMS350023
SC-35MS	60	0,2	0,2	SCMS350028
SC-35MS	60	0,2	0,33	SCMS350033
SC-35MS	60	0,2	0,4	SCMS350038
SC-35MS	60	0,2	1	SCMS350043
SC-35MS	60	0,25	0,1	SCMS350047
SC-35MS	60	0,25	0,25	SCMS350052
SC-35MS	60	0,25	0,5	SCMS350058
SC-35MS	60	0,25	1	SCMS350064
SC-35MS	60	0,32	0,1	SCMS350070
SC-35MS	60	0,32	0,25	SCMS350076
SC-35MS	60	0,32	0,5	SCMS350082
SC-35MS	60	0,32	1	SCMS350088
SC-35MS	60	0,32	1,5	SCMS350094
SC-35MS	60	0,53	0,25	SCMS350102
SC-35MS	60	0,53	0,5	SCMS350107
SC-35MS	60	0,53	1	SCMS350113
SC-35MS	60	0,53	1,5	SCMS350119
SC-35MS	75	0,53	1	SCMS350114
SC-35MS	75	0,53	1,5	SCMS350120
SC-35MS	105	0,25	0,25	SCMS350053
SC-35MS	105	0,25	0,5	SCMS350059
SC-35MS	105	0,25	1	SCMS350065
SC-35MS	105	0,32	0,1	SCMS350071
SC-35MS	105	0,32	0,25	SCMS350077
SC-35MS	105	0,32	0,5	SCMS350083
SC-35MS	105	0,32	1	SCMS350089
SC-35MS	105	0,32	1,5	SCMS350095

SC-5 MS Columns

Composition: 5% Phenyl, 95% Methyl Polysiloxane.

Low polarity.

USP classification: G27, G36, G41.

EPA methods: EPA 513, 528, 604, 606, 610, 613, 625, 1625, 1653, 8100, 8141A/B.

Alternative to: 007™-5 ms, AT™-5 ms, BPX™-5, DB™-5 ms, DB™-Ultra 2, HP™-5 ms, Rtx™-5 ms, SPB™-5, Equity™-5 ms, ZB™-5 ms.

Phase	Leng (m)	ID (mm)	Thickness Film (µm)	ART. NO.
SC-5MS	10	0,18	0,18	SCMS500001
SC-5MS	10	0,18	0,2	SCMS500006
SC-5MS	10	0,18	0,4	SCMS500014
SC-5MS	10	0,2	0,1	SCMS500019
SC-5MS	10	0,2	0,2	SCMS500024
SC-5MS	10	0,2	0,4	SCMS500034
SC-5MS	10	0,2	1	SCMS500039
SC-5MS	10	0,25	0,25	SCMS500048
SC-5MS	10	0,25	0,5	SCMS500054
SC-5MS	10	0,25	1	SCMS500060
SC-5MS	10	0,32	0,1	SCMS500066
SC-5MS	10	0,32	0,25	SCMS500072
SC-5MS	10	0,32	0,5	SCMS500078
SC-5MS	10	0,32	1	SCMS500084
SC-5MS	10	0,32	1,5	SCMS500090
SC-5MS	10	0,53	0,1	SCMS500096
SC-5MS	10	0,53	0,5	SCMS500103
SC-5MS	10	0,53	1	SCMS500108
SC-5MS	10	0,53	1,5	SCMS500115
SC-5MS	12	0,2	0,33	SCMS500029
SC-5MS	15	0,25	0,1	SCMS350044
SC-5MS	15	0,25	0,25	SCMS350049
SC-5MS	15	0,25	0,5	SCMS350055
SC-5MS	15	0,25	1	SCMS350061
SC-5MS	15	0,32	0,1	SCMS350067
SC-5MS	15	0,32	0,25	SCMS350073
SC-5MS	15	0,32	0,5	SCMS350079
SC-5MS	15	0,32	1	SCMS350085
SC-5MS	15	0,32	1,5	SCMS350091
SC-5MS	15	0,53	0,1	SCMS350097
SC-5MS	15	0,53	0,25	SCMS350099
SC-5MS	15	0,53	0,5	SCMS350104
SC-5MS	15	0,53	1	SCMS350109
SC-5MS	15	0,53	1,5	SCMS350116
SC-5MS	20	0,18	0,18	SCMS500002
SC-5MS	20	0,18	0,2	SCMS500007
SC-5MS	20	0,18	0,36	SCMS500011
SC-5MS	20	0,18	0,4	SCMS500015

Phase	Leng (m)	ID (mm)	Thickness Film (µm)	ART. NO.
SC-5MS	20	0,2	0,1	SCMS500020
SC-5MS	20	0,2	0,2	SCMS500025
SC-5MS	20	0,2	0,4	SCMS500035
SC-5MS	20	0,2	1	SCMS500040
SC-5MS	25	0,2	0,33	SCMS500030
SC-5MS	25	0,25	0,25	SC5M253207
SC-5MS	30	0,2	0,33	SCMS500031
SC-5MS	30	0,25	0,1	SCMS500045
SC-5MS	30	0,25	0,25	SCMS500050
SC-5MS	30	0,25	0,5	SCMS500056
SC-5MS	30	0,25	1	SCMS500062
SC-5MS	30	0,32	0,1	SCMS500068
SC-5MS	30	0,32	0,25	SCMS500074
SC-5MS	30	0,32	0,5	SCMS500080
SC-5MS	30	0,32	1	SCMS500086
SC-5MS	30	0,32	1,5	SCMS500092
SC-5MS	30	0,53	0,1	SCMS500098
SC-5MS	30	0,53	0,25	SCMS500100
SC-5MS	30	0,53	0,5	SCMS500105
SC-5MS	30	0,53	1	SCMS500110
SC-5MS	30	0,53	1,5	SCMS500117
SC-5MS	40	0,18	0,18	SCMS500003
SC-5MS	40	0,18	0,2	SCMS500008
SC-5MS	40	0,18	0,36	SCMS500012
SC-5MS	40	0,18	0,4	SCMS500016
SC-5MS	40	0,2	0,1	SCMS500021
SC-5MS	40	0,2	0,2	SCMS500026
SC-5MS	40	0,2	0,4	SCMS500036
SC-5MS	40	0,2	1	SCMS500041
SC-5MS	50	0,18	0,18	SCMS500004
SC-5MS	50	0,18	0,2	SCMS500009
SC-5MS	50	0,18	0,4	SCMS500017
SC-5MS	50	0,2	0,1	SCMS500022
SC-5MS	50	0,2	0,2	SCMS500027
SC-5MS	50	0,2	0,33	SCMS500032
SC-5MS	50	0,2	0,4	SCMS500037
SC-5MS	50	0,2	1	SCMS500042
SC-5MS	50	0,25	0,1	SCMS500046
SC-5MS	50	0,25	0,25	SCMS500051
SC-5MS	50	0,25	0,5	SCMS500057
SC-5MS	50	0,25	1	SCMS500063
SC-5MS	50	0,32	0,1	SCMS500069
SC-5MS	50	0,32	0,25	SCMS500075
SC-5MS	50	0,32	0,5	SCMS500081
SC-5MS	50	0,32	1	SCMS500087
SC-5MS	50	0,32	1,5	SCMS500093

Phase	Leng (m)	ID (mm)	Thickness Film (µm)	ART. NO.
SC-5MS	50	0,53	0,25	SCMS500101
SC-5MS	50	0,53	0,5	SCMS500106
SC-5MS	50	0,53	1	SCMS500111
SC-5MS	50	0,53	1,5	SCMS500118
SC-5MS	60	0,18	0,25	SC5M603211
SC-5MS	60	0,18	0,18	SCMS500005
SC-5MS	60	0,18	0,2	SCMS500010
SC-5MS	60	0,18	0,36	SCMS500013
SC-5MS	60	0,2	0,4	SCMS500018
SC-5MS	60	0,2	0,1	SCMS500023
SC-5MS	60	0,2	0,2	SCMS500028
SC-5MS	60	0,2	0,33	SCMS500033
SC-5MS	60	0,2	0,4	SCMS500038
SC-5MS	60	0,25	1	SCMS500043
SC-5MS	60	0,25	0,1	SCMS500047
SC-5MS	60	0,25	0,25	SCMS500052
SC-5MS	60	0,25	0,5	SCMS500058
SC-5MS	60	0,32	1	SCMS500064
SC-5MS	60	0,32	0,1	SCMS500070
SC-5MS	60	0,32	0,25	SCMS500076
SC-5MS	60	0,32	0,5	SCMS500082
SC-5MS	60	0,32	1	SCMS500088
SC-5MS	60	0,32	1,5	SCMS500094
SC-5MS	60	0,53	0,25	SCMS500102
SC-5MS	60	0,53	0,5	SCMS500107
SC-5MS	60	0,53	1	SCMS500113
SC-5MS	60	0,53	1,5	SCMS500119
SC-5MS	75	0,53	1	SCMS500114
SC-5MS	75	0,53	1,5	SCMS500120
SC-5MS	105	0,25	0,25	SCMS500053
SC-5MS	105	0,25	0,5	SCMS500059
SC-5MS	105	0,25	1	SCMS500065
SC-5MS	105	0,32	0,1	SCMS500071
SC-5MS	105	0,32	0,25	SCMS500077
SC-5MS	105	0,32	0,5	SCMS500083
SC-5MS	105	0,32	1	SCMS500089
SC-5MS	105	0,32	1,5	SCMS500095

SC-624 MS Columns

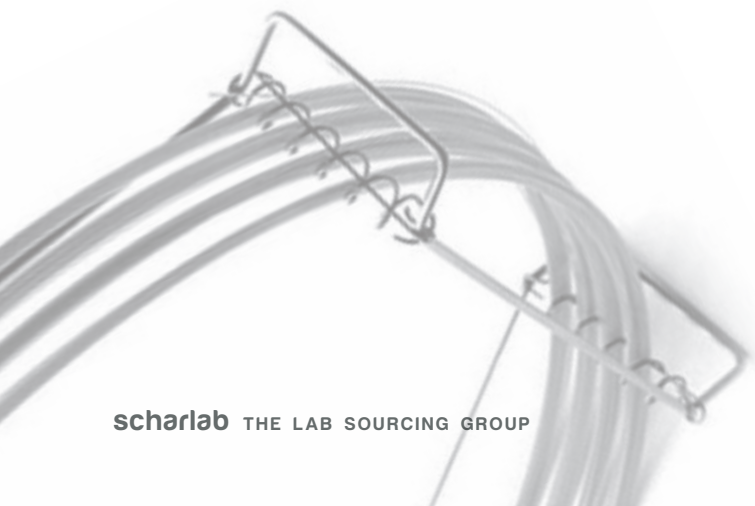
Composition: 6% Cyanopropylphenyl, 94% Methyl Polysiloxane.

Low bleeding.

Mid-polarity Stationary Phase.

USP classification: G43.

Phase	Leng (m)	ID (mm)	Thickness Film (µm)	ART. NO.
SC-624MS	10	0,18	0,18	SCMS624001
SC-624MS	10	0,18	0,2	SCMS624006
SC-624MS	10	0,18	0,4	SCMS624011
SC-624MS	10	0,25	0,25	SCMS624027
SC-624MS	10	0,25	0,5	SCMS624033
SC-624MS	10	0,25	1	SCMS624039
SC-624MS	10	0,32	0,1	SCMS624052
SC-624MS	10	0,32	0,25	SCMS624058
SC-624MS	10	0,32	0,5	SCMS624064
SC-624MS	10	0,32	1	SCMS624070
SC-624MS	10	0,32	1,5	SCMS624076
SC-624MS	10	0,32	3	SCMS624087
SC-624MS	10	0,53	0,1	SCMS624093
SC-624MS	10	0,53	0,5	SCMS624100
SC-624MS	10	0,53	1	SCMS624105
SC-624MS	10	0,53	1,5	SCMS624111
SC-624MS	10	0,53	3	SCMS624117
SC-624MS	15	0,25	0,1	SCMS624023
SC-624MS	15	0,25	0,25	SCMS624028
SC-624MS	15	0,25	0,5	SCMS624034
SC-624MS	15	0,25	1	SCMS624040
SC-624MS	15	0,32	0,1	SCMS624053
SC-624MS	15	0,32	0,25	SCMS624059
SC-624MS	15	0,32	0,5	SCMS624065
SC-624MS	15	0,32	1	SCMS624071
SC-624MS	15	0,32	1,5	SCMS624077
SC-624MS	15	0,32	3	SCMS624088
SC-624MS	15	0,53	0,1	SCMS624094
SC-624MS	15	0,53	0,25	SCMS624096
SC-624MS	15	0,53	0,5	SCMS624101
SC-624MS	15	0,53	1	SCMS624106
SC-624MS	15	0,53	1,5	SCMS624112
SC-624MS	15	0,53	3	SCMS624118
SC-624MS	20	0,18	0,18	SCMS624002
SC-624MS	20	0,18	0,2	SCMS624007
SC-624MS	20	0,18	0,4	SCMS624012
SC-624MS	20	0,18	1	SCMS624015
SC-624MS	20	0,2	1,12	SCMS624019
SC-624MS	30	0,25	0,1	SCMS624024
SC-624MS	30	0,25	0,25	SCMS624029
SC-624MS	30	0,25	0,5	SCMS624035
SC-624MS	30	0,25	1	SCMS624041



Phase	Leng (m)	ID (mm)	Thickness Film (µm)	ART. NO.
SC-624MS	30	0,25	1,4	SCMS624044
SC-624MS	30	0,25	3	SCMS624047
SC-624MS	30	0,32	0,1	SCMS624054
SC-624MS	30	0,32	0,25	SCMS624060
SC-624MS	30	0,32	0,5	SCMS624066
SC-624MS	30	0,32	1	SCMS624072
SC-624MS	30	0,32	1,5	SCMS624078
SC-624MS	30	0,32	1,8	SCMS624082
SC-624MS	30	0,32	3	SCMS624089
SC-624MS	30	0,53	0,1	SCMS624095
SC-624MS	30	0,53	0,25	SCMS624097
SC-624MS	30	0,53	0,5	SCMS624102
SC-624MS	30	0,53	1	SCMS624107
SC-624MS	30	0,53	1,5	SCMS624113
SC-624MS	30	0,53	3	SCMS624119
SC-624MS	40	0,18	0,18	SCMS624003
SC-624MS	40	0,18	0,2	SCMS624008
SC-624MS	40	0,18	0,4	SCMS624013
SC-624MS	40	0,18	1	SCMS624016
SC-624MS	40	0,2	1,12	SCMS624020
SC-624MS	50	0,18	0,18	SCMS624004
SC-624MS	50	0,18	0,2	SCMS624009
SC-624MS	50	0,18	0,4	SCMS624014
SC-624MS	50	0,18	1	SCMS624017
SC-624MS	50	0,2	1,12	SCMS624021
SC-624MS	50	0,25	0,1	SCMS624025
SC-624MS	50	0,25	0,25	SCMS624030
SC-624MS	50	0,25	0,5	SCMS624036
SC-624MS	50	0,25	1	SCMS624042
SC-624MS	50	0,25	1,4	SCMS624045
SC-624MS	50	0,25	3	SCMS624048
SC-624MS	50	0,32	0,1	SCMS624055
SC-624MS	50	0,32	0,25	SCMS624061
SC-624MS	50	0,32	0,5	SCMS624067
SC-624MS	50	0,32	1	SCMS624073
SC-624MS	50	0,32	1,5	SCMS624079
SC-624MS	50	0,32	1,8	SCMS624083
SC-624MS	50	0,32	3	SCMS624090
SC-624MS	50	0,53	0,25	SCMS624098
SC-624MS	50	0,53	0,5	SCMS624103

Phase	Leng (m)	ID (mm)	Thickness Film (µm)	ART. NO.
SC-624MS	50	0,53	1	SCMS624108
SC-624MS	50	0,53	1,5	SCMS624114
SC-624MS	50	0,53	3	SCMS624120
SC-624MS	60	0,18	0,18	SCMS624005
SC-624MS	60	0,18	0,2	SCMS624010
SC-624MS	60	0,18	1	SCMS624018
SC-624MS	60	0,2	1,12	SCMS624022
SC-624MS	60	0,25	0,1	SCMS624026
SC-624MS	60	0,25	0,25	SCMS624031
SC-624MS	60	0,25	0,5	SCMS624037
SC-624MS	60	0,25	1	SCMS624043
SC-624MS	60	0,25	1,4	SCMS624046
SC-624MS	60	0,25	1,4	SCMS624050
SC-624MS	60	0,25	3	SCMS624049
SC-624MS	60	0,32	0,1	SCMS624056
SC-624MS	60	0,32	0,25	SCMS624062
SC-624MS	60	0,32	0,5	SCMS624068
SC-624MS	60	0,32	1	SCMS624074
SC-624MS	60	0,32	1,5	SCMS624080
SC-624MS	60	0,32	1,8	SCMS624084
SC-624MS	60	0,32	3	SCMS624091
SC-624MS	60	0,53	0,25	SCMS624099
SC-624MS	60	0,53	0,5	SCMS624104
SC-624MS	60	0,53	1	SCMS624109
SC-624MS	60	0,53	1,5	SCMS624115
SC-624MS	60	0,53	3	SCMS624122
SC-624MS	75	0,32	1,8	SCMS624085
SC-624MS	75	0,53	1	SCMS624110
SC-624MS	75	0,53	1,5	SCMS624116
SC-624MS	75	0,53	3	SCMS624123
SC-624MS	105	0,25	0,25	SCMS624032
SC-624MS	105	0,25	0,5	SCMS624038
SC-624MS	105	0,25	1,4	SCMS624051
SC-624MS	105	0,32	0,1	SCMS624057
SC-624MS	105	0,32	0,25	SCMS624063
SC-624MS	105	0,32	0,5	SCMS624069
SC-624MS	105	0,32	1	SCMS624075
SC-624MS	105	0,32	1,5	SCMS624081
SC-624MS	105	0,32	1,8	SCMS624086
SC-624MS	105	0,32	3	SCMS624092

SC-WAX MS Columns

Composition: Polyethylen glycol (PEG).

High polarity.

USP polarity: G14, G15, G16, G20, G39, G47, USP 467 (OVIs).

EPA methods: EPA 602, 603, 619.

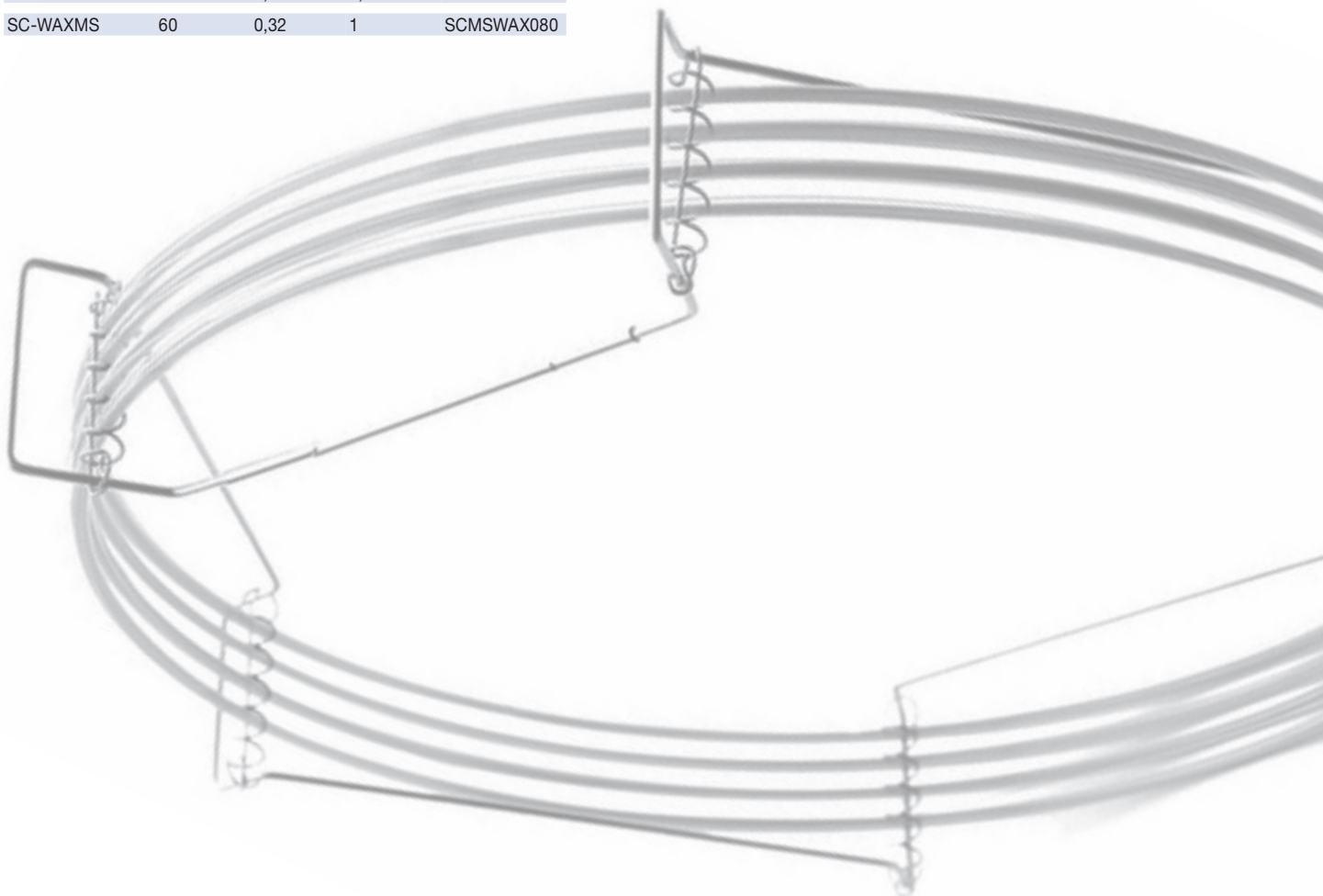
Alternative to: 007™-CW, AT™-Wax ms, BP™-20, VF™-Wax ms, DB™-Wax, HP™-Wax, OmegaWax™, Stabilwax™, ZB™-Wax plus.

Phase	Leng (m)	ID (mm)	Thickness Film (µm)	ART. NO.
SC-WAXMS	10	0,18	0,18	SCMSWAX001
SC-WAXMS	10	0,18	0,2	SCMSWAX006
SC-WAXMS	10	0,18	0,4	SCMSWAX011
SC-WAXMS	10	0,2	0,1	SCMSWAX016
SC-WAXMS	10	0,2	0,2	SCMSWAX021
SC-WAXMS	10	0,2	0,4	SCMSWAX026
SC-WAXMS	10	0,2	1	SCMSWAX031
SC-WAXMS	10	0,25	0,25	SCMSWAX040
SC-WAXMS	10	0,25	0,5	SCMSWAX046
SC-WAXMS	10	0,25	1	SCMSWAX052
SC-WAXMS	10	0,32	0,1	SCMSWAX058
SC-WAXMS	10	0,32	0,25	SCMSWAX064
SC-WAXMS	10	0,32	0,5	SCMSWAX070
SC-WAXMS	10	0,32	1	SCMSWAX076
SC-WAXMS	10	0,32	1,5	SCMSWAX082
SC-WAXMS	10	0,32	3	SCMSWAX088
SC-WAXMS	10	0,53	0,1	SCMSWAX094
SC-WAXMS	10	0,53	0,5	SCMSWAX101
SC-WAXMS	10	0,53	1	SCMSWAX106
SC-WAXMS	10	0,53	1,5	SCMSWAX112
SC-WAXMS	10	0,53	2	SCMSWAX118
SC-WAXMS	10	0,53	2,5	SCMSWAX124
SC-WAXMS	15	0,25	0,1	SCMSWAX036
SC-WAXMS	15	0,25	0,25	SCMSWAX041
SC-WAXMS	15	0,25	0,5	SCMSWAX047
SC-WAXMS	15	0,25	1	SCMSWAX053
SC-WAXMS	15	0,32	0,1	SCMSWAX059
SC-WAXMS	15	0,32	0,25	SCMSWAX065
SC-WAXMS	15	0,32	0,5	SCMSWAX071
SC-WAXMS	15	0,32	1	SCMSWAX077
SC-WAXMS	15	0,32	1,5	SCMSWAX083
SC-WAXMS	15	0,32	3	SCMSWAX089
SC-WAXMS	15	0,53	0,1	SCMSWAX095
SC-WAXMS	15	0,53	0,25	SCMSWAX097
SC-WAXMS	15	0,53	0,5	SCMSWAX102
SC-WAXMS	15	0,53	1	SCMSWAX107
SC-WAXMS	15	0,53	1,5	SCMSWAX113
SC-WAXMS	15	0,53	2	SCMSWAX119
SC-WAXMS	15	0,53	2,5	SCMSWAX125

Phase	Leng (m)	ID (mm)	Thickness Film (µm)	ART. NO.
SC-WAXMS	20	0,18	0,18	SCMSWAX002
SC-WAXMS	20	0,18	0,2	SCMSWAX007
SC-WAXMS	20	0,18	0,4	SCMSWAX012
SC-WAXMS	20	0,2	0,1	SCMSWAX017
SC-WAXMS	20	0,2	0,2	SCMSWAX022
SC-WAXMS	20	0,2	0,4	SCMSWAX027
SC-WAXMS	20	0,2	1	SCMSWAX032
SC-WAXMS	30	0,25	0,1	SCMSWAX037
SC-WAXMS	30	0,25	0,25	SCMSWAX042
SC-WAXMS	30	0,25	0,5	SCMSWAX048
SC-WAXMS	30	0,25	1	SCMSWAX054
SC-WAXMS	30	0,32	0,1	SCMSWAX060
SC-WAXMS	30	0,32	0,25	SCMSWAX066
SC-WAXMS	30	0,32	0,5	SCMSWAX072
SC-WAXMS	30	0,32	1	SCMSWAX078
SC-WAXMS	30	0,32	1,5	SCMSWAX084
SC-WAXMS	30	0,32	3	SCMSWAX090
SC-WAXMS	30	0,53	0,1	SCMSWAX096
SC-WAXMS	30	0,53	0,25	SCMSWAX098
SC-WAXMS	30	0,53	0,5	SCMSWAX103
SC-WAXMS	30	0,53	1	SCMSWAX108
SC-WAXMS	30	0,53	1,5	SCMSWAX114
SC-WAXMS	30	0,53	2	SCMSWAX120
SC-WAXMS	30	0,53	2,5	SCMSWAX126
SC-WAXMS	40	0,18	0,18	SCMSWAX003
SC-WAXMS	40	0,18	0,2	SCMSWAX008
SC-WAXMS	40	0,18	0,4	SCMSWAX013
SC-WAXMS	40	0,2	0,1	SCMSWAX018
SC-WAXMS	40	0,2	0,2	SCMSWAX023
SC-WAXMS	40	0,2	0,4	SCMSWAX028
SC-WAXMS	40	0,2	1	SCMSWAX033
SC-WAXMS	50	0,18	0,18	SCMSWAX004
SC-WAXMS	50	0,18	0,2	SCMSWAX009
SC-WAXMS	50	0,18	0,4	SCMSWAX014
SC-WAXMS	50	0,2	0,1	SCMSWAX019
SC-WAXMS	50	0,2	0,2	SCMSWAX024
SC-WAXMS	50	0,2	0,4	SCMSWAX029
SC-WAXMS	50	0,2	1	SCMSWAX034
SC-WAXMS	50	0,25	0,1	SCMSWAX038
SC-WAXMS	50	0,25	0,25	SCMSWAX043
SC-WAXMS	50	0,25	0,5	SCMSWAX049
SC-WAXMS	50	0,25	1	SCMSWAX055
SC-WAXMS	50	0,32	0,1	SCMSWAX061
SC-WAXMS	50	0,32	0,25	SCMSWAX067
SC-WAXMS	50	0,32	0,5	SCMSWAX073
SC-WAXMS	50	0,32	1	SCMSWAX079

Phase	Leng (m)	ID (mm)	Thickness Film (µm)	ART. NO.
SC-WAXMS	50	0,32	1,5	SCMSWAX085
SC-WAXMS	50	0,32	3	SCMSWAX091
SC-WAXMS	50	0,53	0,25	SCMSWAX099
SC-WAXMS	50	0,53	0,5	SCMSWAX104
SC-WAXMS	50	0,53	1	SCMSWAX109
SC-WAXMS	50	0,53	1,5	SCMSWAX115
SC-WAXMS	50	0,53	2	SCMSWAX121
SC-WAXMS	50	0,53	2,5	SCMSWAX127
SC-WAXMS	60	0,18	0,18	SCMSWAX005
SC-WAXMS	60	0,18	0,2	SCMSWAX010
SC-WAXMS	60	0,18	0,4	SCMSWAX015
SC-WAXMS	60	0,2	0,1	SCMSWAX020
SC-WAXMS	60	0,2	0,2	SCMSWAX025
SC-WAXMS	60	0,2	0,4	SCMSWAX030
SC-WAXMS	60	0,2	1	SCMSWAX035
SC-WAXMS	60	0,25	0,1	SCMSWAX039
SC-WAXMS	60	0,25	0,25	SCMSWAX044
SC-WAXMS	60	0,25	0,5	SCMSWAX050
SC-WAXMS	60	0,25	1	SCMSWAX056
SC-WAXMS	60	0,32	0,1	SCMSWAX062
SC-WAXMS	60	0,32	0,25	SCMSWAX068
SC-WAXMS	60	0,32	0,5	SCMSWAX074
SC-WAXMS	60	0,32	1	SCMSWAX080

Phase	Leng (m)	ID (mm)	Thickness Film (µm)	ART. NO.
SC-WAXMS	60	0,32	1,5	SCMSWAX086
SC-WAXMS	60	0,32	3	SCMSWAX092
SC-WAXMS	60	0,53	0,25	SCMSWAX100
SC-WAXMS	60	0,53	0,5	SCMSWAX105
SC-WAXMS	60	0,53	1	SCMSWAX110
SC-WAXMS	60	0,53	1,5	SCMSWAX116
SC-WAXMS	60	0,53	2	SCMSWAX122
SC-WAXMS	60	0,53	2,5	SCMSWAX128
SC-WAXMS	75	0,53	1	SCMSWAX111
SC-WAXMS	75	0,53	1,5	SCMSWAX117
SC-WAXMS	75	0,53	2	SCMSWAX123
SC-WAXMS	75	0,53	2,5	SCMSWAX129
SC-WAXMS	105	0,25	0,25	SCMSWAX045
SC-WAXMS	105	0,25	0,5	SCMSWAX051
SC-WAXMS	105	0,25	1	SCMSWAX057
SC-WAXMS	105	0,32	0,1	SCMSWAX063
SC-WAXMS	105	0,32	0,25	SCMSWAX069
SC-WAXMS	105	0,32	0,5	SCMSWAX075
SC-WAXMS	105	0,32	1	SCMSWAX081
SC-WAXMS	105	0,32	1,5	SCMSWAX087
SC-WAXMS	105	0,32	3	SCMSWAX093



FAST columns



SC-1 FAST Columns

Composition: 100% Methyl Polysiloxane.

Non-polar Alternative to: 007™-1, AT™-1, BP™-1, CP Sil 5CB, BT™-1, OV™-1, HP™-1, Rtx™-1, SPB™-1, ZB™-1.

Phase	Leng (m)	ID (mm)	Thickness Film (µm)	ART. NO.
SC-1FAST	2,5	0,05	0,05	SC1F110002
SC-1FAST	5	0,05	0,05	SC1F110003
SC-1FAST	5	0,05	0,1	SC1F110004
SC-1FAST	5	0,05	0,2	SC1F110007
SC-1FAST	5	0,05	0,4	SC1F110010
SC-1FAST	5	0,15	0,15	SC1F110013
SC-1FAST	10	0,1	0,1	SC1F110005
SC-1FAST	10	0,1	0,2	SC1F110008
SC-1FAST	10	0,1	0,4	SC1F110011
SC-1FAST	10	0,15	0,15	SC1F110014
SC-1FAST	15	0,1	0,1	SC1F110006
SC-1FAST	15	0,1	0,2	SC1F110009
SC-1FAST	15	0,1	0,4	SC1F110012
SC-1FAST	15	0,15	0,15	SC1F110015
SC-1FAST	20	0,15	0,15	SC1F110016
SC-1FAST	30	0,15	0,15	SC1F110017

SC-10 FAST Columns

Composition: 100% Cyanopropyl Polysiloxane.

High polarity.

USP classification: G5, G8, G48.

Alternative to: AT™-Silar, BPX™-70, CP-Sil™88, HP™-88, Rtx™-2560, SPT™-2560, SPT™-2331, SPT™-2380.

Phase	Leng (m)	ID (mm)	Thickness Film (µm)	ART. NO.
SC-10FAST	10	0,18	0,1	SC10F12001
SC-10FAST	10	0,2	0,1	SC10F12003
SC-10FAST	20	0,18	0,1	SC10F12002
SC-10FAST	20	0,2	0,1	SC10F12004
SC-10FAST	20	0,2	0,2	SC10F12005

SC-13 FAST Columns

Composition: 13% Phenyl, 87% Methyl Polysiloxane.

Intermediate polarity.

EPA methods: EPA 601, 602, 624.

Alternative to: Cp-Sil™ 13 CB.

Phase	Leng (m)	ID (mm)	Thickness Film (µm)	ART. NO.
SC-13FAST	2,5	0,05	0,05	SC13F14002
SC-13FAST	5	0,05	0,05	SC13F13003
SC-13FAST	5	0,1	0,1	SC13F13004
SC-13FAST	5	0,1	0,2	SC13F13007
SC-13FAST	5	0,1	0,4	SC13F13010
SC-13FAST	5	0,15	0,15	SC13F13013
SC-13FAST	10	0,1	0,1	SC13F13005
SC-13FAST	10	0,1	0,2	SC13F13008
SC-13FAST	10	0,1	0,4	SC13F13011
SC-13FAST	10	0,15	0,15	SC13F13014
SC-13FAST	15	0,1	0,1	SC13F13006
SC-13FAST	15	0,1	0,2	SC13F13009
SC-13FAST	15	0,1	0,4	SC13F13012
SC-13FAST	15	0,15	0,15	SC13F13015
SC-13FAST	20	0,15	0,15	SC13F13016
SC-13FAST	30	0,15	0,15	SC13F13017

SC-1301 FAST Columns

Composition: 13% Phenyl, 87% Methyl Polysiloxane.

Intermediate polarity.

EPA methods: EPA 601, 602, 624.

Alternative to: Cp-Sil™ 13 CB.

Phase	Leng (m)	ID (mm)	Thickness Film (µm)	ART. NO.
SC-1301FAST	2,5	0,05	0,05	SC13F14002
SC-1301FAST	5	0,05	0,05	SC13F14003
SC-1301FAST	5	0,1	0,1	SC13F14004
SC-1301FAST	5	0,1	0,2	SC13F14007
SC-1301FAST	5	0,1	0,4	SC13F14010
SC-1301FAST	5	0,15	0,15	SC13F14013

Phase	Leng (m)	ID (mm)	Thickness Film (µm)	ART. NO.
SC-1301FAST	10	0,1	0,1	SC13F14005
SC-1301FAST	10	0,1	0,2	SC13F14008
SC-1301FAST	10	0,1	0,4	SC13F14011
SC-1301FAST	10	0,15	0,15	SC13F14014
SC-1301FAST	15	0,1	0,1	SC13F14006
SC-1301FAST	15	0,1	0,2	SC13F14009
SC-1301FAST	15	0,1	0,4	SC13F14012
SC-1301FAST	15	0,15	0,15	SC13F14015
SC-1301FAST	20	0,15	0,15	SC13F14016
SC-1301FAST	30	0,15	0,15	SC13F14017

SC-17 FAST Columns

Composition: 50% Phenyl, 50% Methyl Polysiloxane.

Mid to High polarity.

USP classification: G3, G17.

EPA methods: EPA 604, 608, 619, 8060, 8081.

Alternative to: 007™-17, AT™-50, BPX™-50, CP Sij™ 24 CB, DB™-17, HP™-17, Rtx™-17, SPB™-50, ZB™-50.

Phase	Leng (m)	ID (mm)	Thickness Film (µm)	ART. NO.
SC-17FAST	2,5	0,05	0,05	SC17F15002
SC-17FAST	5	0,05	0,05	SC17F15003
SC-17FAST	5	0,1	0,1	SC17F15004
SC-17FAST	5	0,1	0,2	SC17F15007
SC-17FAST	5	0,1	0,4	SC17F15010
SC-17FAST	5	0,15	0,15	SC17F15013
SC-17FAST	10	0,1	0,1	SC17F15005
SC-17FAST	10	0,1	0,2	SC17F15008
SC-17FAST	10	0,1	0,4	SC17F15011
SC-17FAST	10	0,15	0,15	SC17F15014
SC-17FAST	15	0,1	0,1	SC17F15006
SC-17FAST	15	0,1	0,2	SC17F15009
SC-17FAST	15	0,1	0,4	SC17F15012
SC-17FAST	15	0,15	0,15	SC17F15015
SC-17FAST	20	0,15	0,15	SC17F15016
SC-17FAST	30	0,15	0,15	SC17F15017

SC-1701 FAST Columns

Composition: 14% Cyanopropylphenyl, 86% Methyl Polysiloxane.

Intermediate polarity. / USP classification: G46.

EPA methods: EPA 513, 515.2, 552.2, 607, 619, 622, 8091, 8121.

Alternative to: 07™-1701, AT™-1701, BP™-10, CP-Sij™ 19 CB, DB™-1701, HP™-1701, OV™-1701, Rtx™-1701, SPB™-1701, VF™-1701 ms, ZB™-1701.

Phase	Leng (m)	ID (mm)	Thickness Film (µm)	ART. NO.
SC-1701FAST	2,5	0,05	0,05	SC17F16002
SC-1701FAST	5	0,05	0,05	SC17F16003
SC-1701FAST	5	0,1	0,1	SC17F16004
SC-1701FAST	5	0,1	0,2	SC17F16007
SC-1701FAST	5	0,1	0,4	SC17F16010
SC-1701FAST	5	0,15	0,15	SC17F16013
SC-1701FAST	10	0,1	0,1	SC17F16005
SC-1701FAST	10	0,1	0,2	SC17F16008
SC-1701FAST	10	0,1	0,4	SC17F16011
SC-1701FAST	10	0,15	0,15	SC17F16014
SC-1701FAST	15	0,1	0,1	SC17F16006
SC-1701FAST	15	0,1	0,2	SC17F16009
SC-1701FAST	15	0,1	0,4	SC17F16012
SC-1701FAST	15	0,15	0,15	SC17F16015
SC-1701FAST	20	0,15	0,15	SC17F16016
SC-1701FAST	30	0,15	0,15	SC17F16017

SC-20 FAST Columns

Composition: 20% Phenyl, 80% Methyl Polysiloxane.

Intermediate polarity. / USP classification: G28, G32.

Alternative to: 007™-7, AT™-20, Rtx™-20, SPB™-20.

Phase	Leng (m)	ID (mm)	Thickness Film (µm)	ART. NO.
SC-20FAST	2,5	0,05	0,05	SC20F17002
SC-20FAST	5	0,05	0,05	SC20F17003
SC-20FAST	5	0,1	0,1	SC20F17004
SC-20FAST	5	0,1	0,2	SC20F17007
SC-20FAST	5	0,1	0,4	SC20F17010
SC-20FAST	5	0,15	0,15	SC20F17013
SC-20FAST	10	0,1	0,1	SC20F17005
SC-20FAST	10	0,1	0,2	SC20F17008
SC-20FAST	10	0,1	0,4	SC20F17011
SC-20FAST	10	0,15	0,15	SC20F17014
SC-20FAST	15	0,1	0,1	SC20F17006
SC-20FAST	15	0,1	0,2	SC20F17009
SC-20FAST	15	0,1	0,4	SC20F17012
SC-20FAST	15	0,15	0,15	SC20F17015
SC-20FAST	20	0,15	0,15	SC20F17016
SC-20FAST	30	0,15	0,15	SC20F17017

SC-200 FAST Columns

Composition: Trifluoropropyl Methyl Polysiloxane.

High polarity. / USP classification: G6.

Alternative to: 007TM-210, ATTM-210, DBTM-200, DBTM-210, OVTM-202, OVTM-210, OVTM-215, RtxTM-200, SPTM-2401, VFTM-200 ms.

Phase	Leng (m)	ID (mm)	Thickness Film (µm)	ART. NO.
SC-200FAST	2,5	0,05	0,05	SC20F18002
SC-200FAST	5	0,05	0,05	SC20F18003
SC-200FAST	5	0,1	0,1	SC20F18004
SC-200FAST	5	0,1	0,2	SC20F18007
SC-200FAST	5	0,1	0,4	SC20F18010
SC-200FAST	5	0,15	0,15	SC20F18013
SC-200FAST	10	0,1	0,1	SC20F18005
SC-200FAST	10	0,1	0,2	SC20F18008
SC-200FAST	10	0,1	0,4	SC20F18011
SC-200FAST	10	0,15	0,15	SC20F18014
SC-200FAST	15	0,1	0,1	SC20F18006
SC-200FAST	15	0,1	0,2	SC20F18009
SC-200FAST	15	0,1	0,4	SC20F18012
SC-200FAST	15	0,15	0,15	SC20F18015
SC-200FAST	20	0,15	0,15	SC20F18016
SC-200FAST	30	0,15	0,15	SC20F18017

SC-225 FAST Columns

Composition: 25% Cyanopropyl, 25% Phenyl, 50% Methyl Polysiloxane.

Mid to High polarity. / USP classification: G7, G19.

Alternative to: 007TM-225, ATTM-225, BPTM-225, CP-SilTM 43 CB, DBTM-225, HPTM-225, OVTM-225, RtxTM-225.

Phase	Leng (m)	ID (mm)	Thickness Film (µm)	ART. NO.
SC-225FAST	2,5	0,05	0,05	SC22F19002
SC-225FAST	5	0,05	0,05	SC22F19003
SC-225FAST	5	0,1	0,1	SC22F19004
SC-225FAST	5	0,1	0,2	SC22F19007
SC-225FAST	5	0,1	0,4	SC22F19010
SC-225FAST	5	0,15	0,15	SC22F19013
SC-225FAST	10	0,1	0,1	SC22F19005
SC-225FAST	10	0,1	0,2	SC22F19008
SC-225FAST	10	0,1	0,4	SC22F19011
SC-225FAST	10	0,15	0,15	SC22F19014
SC-225FAST	15	0,1	0,1	SC22F19006
SC-225FAST	15	0,1	0,2	SC22F19009
SC-225FAST	15	0,1	0,4	SC22F19012
SC-225FAST	15	0,15	0,15	SC22F19015
SC-225FAST	20	0,15	0,15	SC22F19016
SC-225FAST	30	0,15	0,15	SC22F19017

SC-35 FAST Columns

Composition: 35% Phenyl, 65% Methyl Polysiloxane.

Intermediate polarity.

Alternative to: DBTM-35, RtxTM-35, MR2, 007TM-11, BPXTM-35, BPXTM-608, SPBTM-35, SPBTM-608.

Phase	Leng (m)	ID (mm)	Thickness Film (µm)	ART. NO.
SC-35FAST	2,5	0,05	0,05	SC35F20002
SC-35FAST	5	0,05	0,05	SC35F20003
SC-35FAST	5	0,1	0,1	SC35F20004
SC-35FAST	5	0,1	0,2	SC35F20007
SC-35FAST	5	0,1	0,4	SC35F20010
SC-35FAST	5	0,15	0,15	SC35F20013
SC-35FAST	10	0,1	0,1	SC35F20005
SC-35FAST	10	0,1	0,2	SC35F20008
SC-35FAST	10	0,1	0,4	SC35F20011
SC-35FAST	10	0,15	0,15	SC35F20014
SC-35FAST	15	0,1	0,1	SC35F20006
SC-35FAST	15	0,1	0,2	SC35F20009
SC-35FAST	15	0,1	0,4	SC35F20012
SC-35FAST	15	0,15	0,15	SC35F20015
SC-35FAST	20	0,15	0,15	SC35F20016
SC-35FAST	30	0,15	0,15	SC35F20017

SC-5 FAST Columns

Composition: 5% Phenyl, 95% Methyl Polysiloxane.

Low polarity.

USP classification: G27, G36, G41.

EPA methods: EPA 611/8110, 604, 606, 607, 608/8081, 609, 612, 613, 615, 619, 622, 8015B, 8041, 8061A, 8082, 8091, 8121, 8141A.

Alternative to: 007TM-5, ATTM-5, BPTM-5, CP-SilTM 8 CB, DBTM-5, HPTM-5, OVTM-5, RtxTM-5, SPBTM-5, ZBTTM-5.

Phase	Leng (m)	ID (mm)	Thickness Film (µm)	ART. NO.
SC-5FAST	2,5	0,05	0,05	SC5F210002
SC-5FAST	5	0,05	0,05	SC5F210003
SC-5FAST	5	0,1	0,1	SC5F210004
SC-5FAST	5	0,1	0,2	SC5F210007
SC-5FAST	5	0,1	0,4	SC5F210010
SC-5FAST	5	0,15	0,15	SC5F210013
SC-5FAST	10	0,1	0,1	SC5F210005
SC-5FAST	10	0,1	0,2	SC5F210008
SC-5FAST	10	0,1	0,4	SC5F210011
SC-5FAST	10	0,15	0,15	SC5F210014
SC-5FAST	15	0,1	0,1	SC5F210006
SC-5FAST	15	0,1	0,2	SC5F210009
SC-5FAST	15	0,1	0,4	SC5F210012
SC-5FAST	15	0,15	0,15	SC5F210015

Phase	Leng (m)	ID (mm)	Thickness Film (µm)	ART. NO.
SC-5FAST	20	0,15	0,15	SC5F210016
SC-5FAST	30	0,15	0,15	SC5F210017

SC-50 FAST Columns

Composition: 50% Cyanopropyl, 50% Methyl Polysiloxane.

Mid to high polarity. / USP classification: G8.

Alternative to: DB™-23, Silar™-5, Rtx™-2330, SP™-2330.

Phase	Leng (m)	ID (mm)	Thickness Film (µm)	ART. NO.
SC-50FAST	10	0,18	0,1	SC50F22001
SC-50FAST	10	0,2	0,1	SC50F22003
SC-50FAST	20	0,18	0,1	SC50F22002
SC-50FAST	20	0,2	0,1	SC50F22004
SC-50FAST	20	0,2	0,2	SC50F22005

SC-624 FAST Columns

Composition: 6% Cyanopropylphenyl, 94% Methyl Polysiloxane.

Intermediate polarity. / USP classification: G43, 467 (OVIs).

EPA methods: EPA 501.3, 502.1, 502.2, 503.1, 504.1, 524.2, 601, 602, 603, 624, 1624, 8010B, 8021B, 8030A, 8260B.

Alternative to: 007™-624, 007™-1301, AT™-624, CP™-1301, DBTM-1301, DB™-624, HP™-1301, HP™-624, Rtx™-624, Rtx™-1301, SPB™-1301, SPB™-624, VF™-624 ms, Vocol™, ZB™-624.

Phase	Leng (m)	ID (mm)	Thickness Film (µm)	ART. NO.
SC-624FAST	2,5	0,05	0,05	SC62F23002
SC-624FAST	5	0,05	0,05	SC62F23003
SC-624FAST	5	0,1	0,1	SC62F23004
SC-624FAST	5	0,1	0,2	SC62F23007
SC-624FAST	5	0,1	0,4	SC62F23010
SC-624FAST	5	0,15	0,15	SC62F23013
SC-624FAST	10	0,1	0,1	SC62F23005
SC-624FAST	10	0,1	0,2	SC62F23008
SC-624FAST	10	0,1	0,4	SC62F23011
SC-624FAST	10	0,15	0,15	SC62F23014
SC-624FAST	15	0,1	0,1	SC62F23006
SC-624FAST	15	0,1	0,2	SC62F23009
SC-624FAST	15	0,1	0,4	SC62F23012
SC-624FAST	15	0,15	0,15	SC62F23015
SC-624FAST	15	0,15	0,15	SC62F23018
SC-624FAST	15	0,15	0,84	SC62F23019
SC-624FAST	20	0,15	0,15	SC62F23016
SC-624FAST	20	0,15	0,84	SC62F23020
SC-624FAST	30	0,15	0,15	SC62F23017
SC-624FAST	30	0,15	0,84	SC62F23021
SC-624FAST	40	0,15	0,84	SC62F23022

SC-ACID FAST Columns

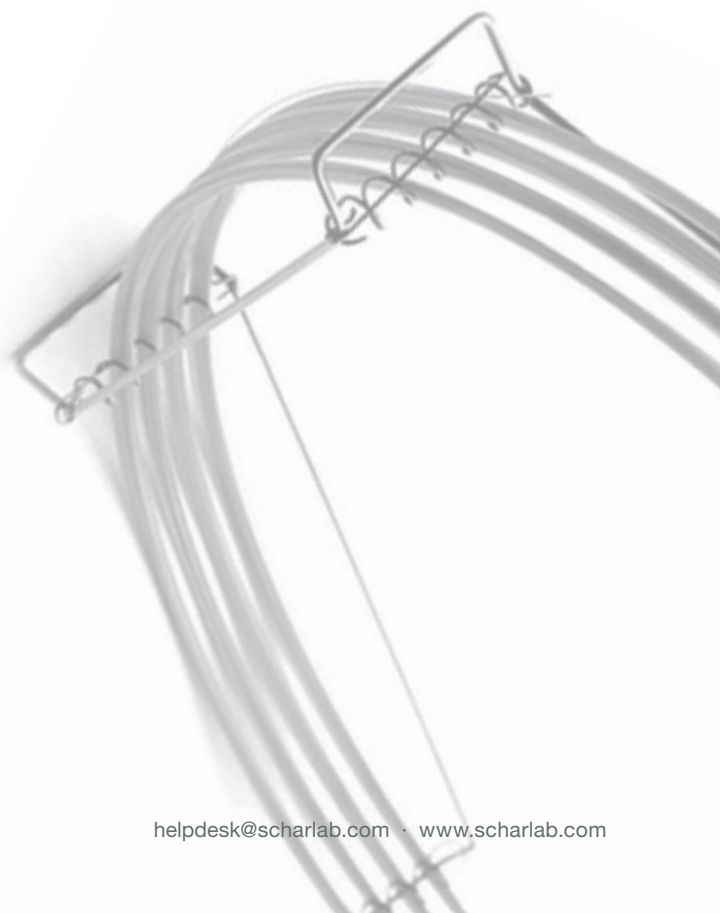
Composition: Polyethylene glycol (PEG) Acid Modified.

High polarity.

USP classification: G14, G15, G16, G25, G35, G39.

Alternative to: 007™-FFAP, AT™-1000, BP™-21, CP™-Wax 58 CB, DB™-FFAP, Nukol™, SPB™-1000, Stabilwax-DA.

Phase	Leng (m)	ID (mm)	Thickness Film (µm)	ART. NO.
SC-ACIDFAST	2,5	0,05	0,05	SCACF25002
SC-ACIDFAST	5	0,05	0,05	SCACF25003
SC-ACIDFAST	5	0,1	0,1	SCACF25004
SC-ACIDFAST	5	0,1	0,2	SCACF25007
SC-ACIDFAST	5	0,1	0,4	SCACF25010
SC-ACIDFAST	5	0,15	0,15	SCACF25013
SC-ACIDFAST	10	0,1	0,1	SCACF25005
SC-ACIDFAST	10	0,1	0,2	SCACF25008
SC-ACIDFAST	10	0,1	0,4	SCACF25011
SC-ACIDFAST	10	0,15	0,15	SCACF25014
SC-ACIDFAST	15	0,1	0,1	SCACF25006
SC-ACIDFAST	15	0,1	0,2	SCACF25009
SC-ACIDFAST	15	0,1	0,4	SCACF25012
SC-ACIDFAST	15	0,15	0,15	SCACF25015
SC-ACIDFAST	20	0,15	0,15	SCACF25017
SC-ACIDFAST	30	0,15	0,15	SCACF25017



SCHT columns



SC-1 HT Columns

Composition: 100% Methyl Polysiloxane for High temperature.
Non-polar.
Stable up to 400 °C.

Phase	Leng (m)	ID (mm)	Thickness Film (µm)	ART. NO.
SC-1HT	5	0,1	0,1	SC1HT31001
SC-1HT	5	0,53	0,09	SC1H151702
SC-1HT	10	0,1	0,1	SC1HT31002
SC-1HT	10	0,32	0,1	SC1HT31009
SC-1HT	10	0,53	0,1	SC1HT31016
SC-1HT	15	0,25	0,1	SC1HT31003
SC-1HT	15	0,25	0,15	SC1HT31004
SC-1HT	15	0,25	0,25	SC1HT31005
SC-1HT	15	0,32	0,1	SC1HT31010
SC-1HT	15	0,32	0,15	SC1HT31011
SC-1HT	15	0,32	0,25	SC1HT31012
SC-1HT	15	0,53	0,1	SC1HT31017
SC-1HT	15	0,53	0,15	SC1HT31018
SC-1HT	15	0,53	0,25	SC1HT31019
SC-1HT	30	0,25	0,1	SC1HT31006
SC-1HT	30	0,25	0,15	SC1HT31007
SC-1HT	30	0,25	0,25	SC1HT31008
SC-1HT	30	0,32	0,1	SC1HT31013
SC-1HT	30	0,32	0,15	SC1HT31014
SC-1HT	30	0,32	0,25	SC1HT31015
SC-1HT	30	0,53	0,1	SC1HT31020
SC-1HT	30	0,53	0,15	SC1HT31021
SC-1HT	30	0,53	0,15	SC1HT31022
SC-1HT	30	0,53	0,25	SC1HT31023

SC-5 HT Columns

Composition: 5% Phenyl, 95% Methyl Polysiloxane for High Temperature.
Low polarity.
Stable up to 400 °C.

Phase	Leng (m)	ID (mm)	Thickness Film (µm)	ART. NO.
SC-5HT	5	0,1	0,1	SC5HT32003
SC-5HT	10	0,1	0,1	SC5HT32002
SC-5HT	10	0,1	0,1	SC5HT32004
SC-5HT	10	0,32	0,1	SC5HT32011
SC-5HT	10	0,53	0,1	SC5HT32018
SC-5HT	15	0,25	0,1	SC5HT32005
SC-5HT	15	0,25	0,15	SC5HT32006
SC-5HT	15	0,25	0,25	SC5HT32007
SC-5HT	15	0,32	0,1	SC5HT32012
SC-5HT	15	0,32	0,15	SC5HT32013
SC-5HT	15	0,32	0,25	SC5HT32014
SC-5HT	15	0,53	0,1	SC5HT32019
SC-5HT	15	0,53	0,15	SC5HT32020
SC-5HT	15	0,53	0,25	SC5HT32021
SC-5HT	25	0,32	0,1	SC5HT32050
SC-5HT	30	0,25	0,1	SC5HT32008
SC-5HT	30	0,25	0,15	SC5HT32009
SC-5HT	30	0,25	0,25	SC5HT32010
SC-5HT	30	0,32	0,1	SC5HT32015
SC-5HT	30	0,32	0,15	SC5HT32016
SC-5HT	30	0,32	0,25	SC5HT32017
SC-5HT	30	0,53	0,1	SC5HT32022
SC-5HT	30	0,53	0,15	SC5HT32023
SC-5HT	30	0,53	0,15	SC5HT32024
SC-5HT	30	0,53	0,25	SC5HT32025

SC-54 HT Columns

Composition: 5% Phenyl, 1% Vinyl, 94% Methyl Polysiloxane for High Temperature.

Low polarity.

Stable up to 400 °C.

Phase	Leng (m)	ID (mm)	Thickness Film (µm)	ART. NO.
SC-54HT	5	0,1	0,1	SC54HT3303
SC-54HT	10	0,1	0,1	SC54HT3302
SC-54HT	10	0,1	0,1	SC54HT3304
SC-54HT	10	0,32	0,1	SC54HT3311
SC-54HT	10	0,53	0,1	SC54HT3318
SC-54HT	15	0,25	0,1	SC54HT3305
SC-54HT	15	0,25	0,15	SC54HT3306
SC-54HT	15	0,25	0,25	SC54HT3307
SC-54HT	15	0,32	0,1	SC54HT3312
SC-54HT	15	0,32	0,15	SC54HT3313
SC-54HT	15	0,32	0,25	SC54HT3314
SC-54HT	15	0,53	0,1	SC54HT3319
SC-54HT	15	0,53	0,15	SC54HT3320
SC-54HT	15	0,53	0,25	SC54HT3321
SC-54HT	30	0,25	0,1	SC54HT3308
SC-54HT	30	0,25	0,15	SC54HT3309
SC-54HT	30	0,25	0,25	SC54HT3310
SC-54HT	30	0,32	0,1	SC54HT3315
SC-54HT	30	0,32	0,15	SC54HT3316
SC-54HT	30	0,32	0,25	SC54HT3317
SC-54HT	30	0,53	0,1	SC54HT3322
SC-54HT	30	0,53	0,15	SC54HT3323
SC-54HT	30	0,53	0,15	SC54HT3324
SC-54HT	30	0,53	0,25	SC54HT3325

SC-WAX HT Columns

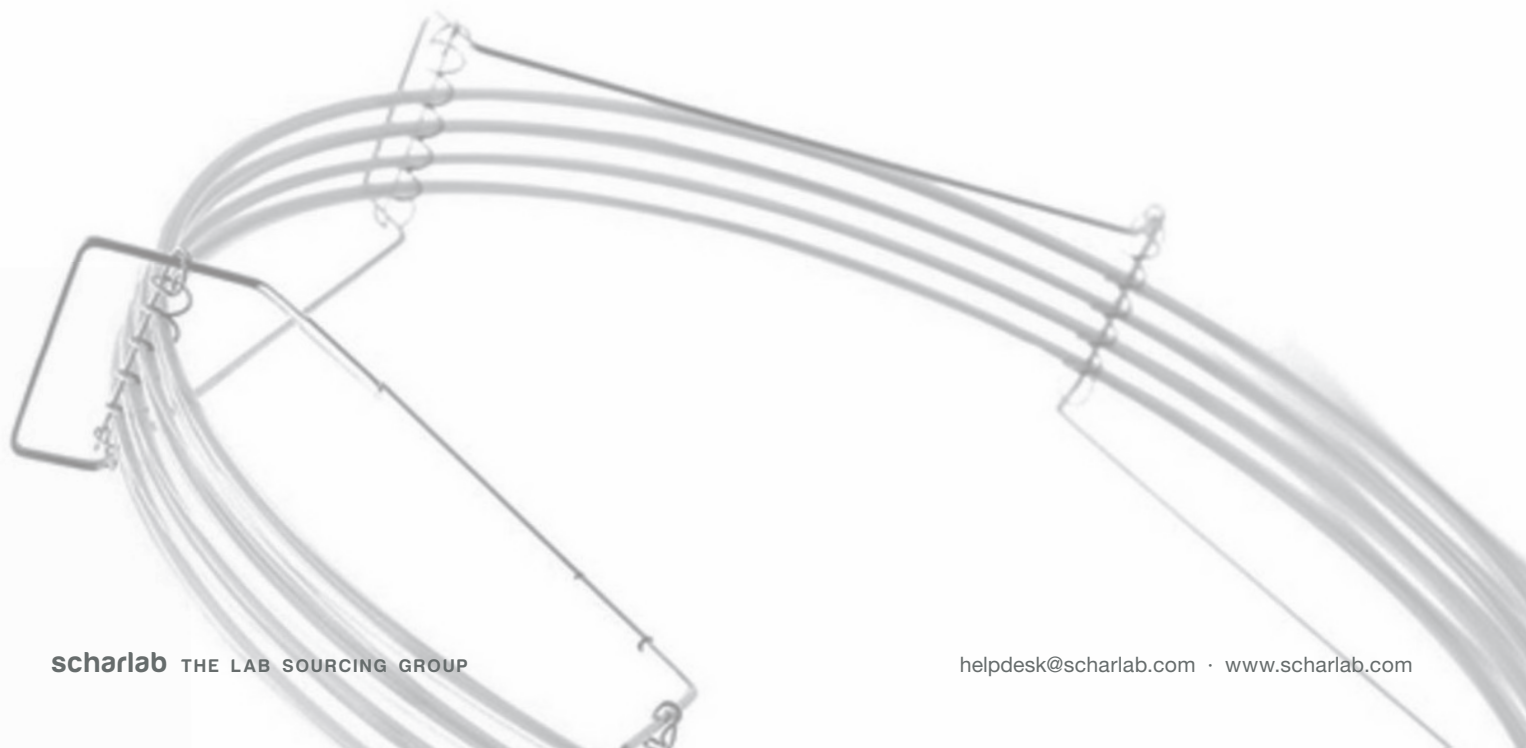
Composition: Polyethylenglycol (PEG) for High Temperature.

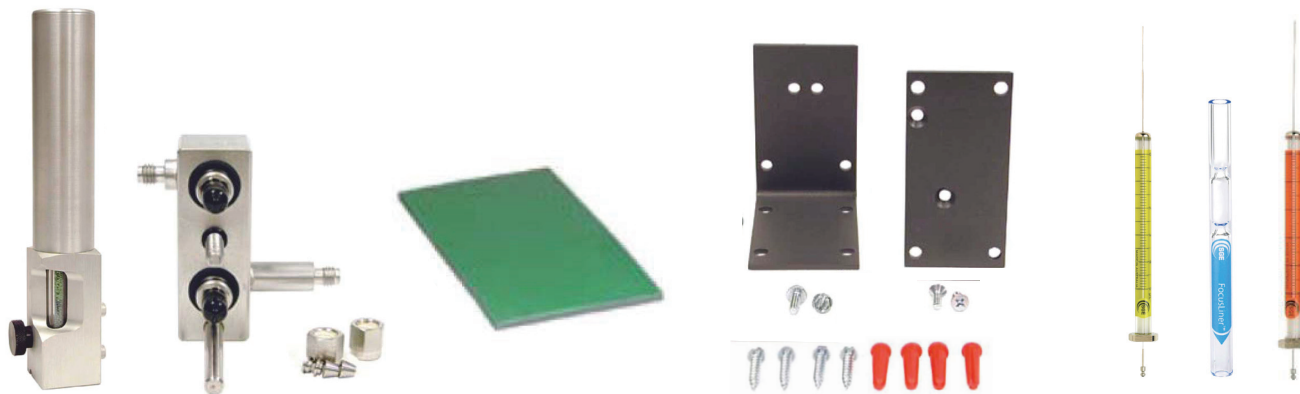
High temperature.

High polarity.

Stable up to 400 °C.

Phase	Leng (m)	ID (mm)	Thickness Film (µm)	ART. NO.
SC-WAXHT	5	0,1	0,1	SCWXHT4303
SC-WAXHT	10	0,1	0,1	SCWXHT4302
SC-WAXHT	10	0,1	0,1	SCWXHT4304
SC-WAXHT	10	0,32	0,1	SCWXHT4311
SC-WAXHT	10	0,53	0,1	SCWXHT4318
SC-WAXHT	15	0,25	0,1	SCWXHT4305
SC-WAXHT	15	0,25	0,15	SCWXHT4306
SC-WAXHT	15	0,25	0,25	SCWXHT4307
SC-WAXHT	15	0,32	0,1	SCWXHT4312
SC-WAXHT	15	0,32	0,15	SCWXHT4313
SC-WAXHT	15	0,32	0,25	SCWXHT4314
SC-WAXHT	15	0,53	0,1	SCWXHT4319
SC-WAXHT	15	0,53	0,15	SCWXHT4320
SC-WAXHT	15	0,53	0,25	SCWXHT4321
SC-WAXHT	30	0,25	0,1	SCWXHT4308
SC-WAXHT	30	0,25	0,15	SCWXHT4309
SC-WAXHT	30	0,25	0,25	SCWXHT4310
SC-WAXHT	30	0,32	0,1	SCWXHT4315
SC-WAXHT	30	0,32	0,15	SCWXHT4316
SC-WAXHT	30	0,32	0,25	SCWXHT4317
SC-WAXHT	30	0,53	0,1	SCWXHT4322
SC-WAXHT	30	0,53	0,15	SCWXHT4323
SC-WAXHT	30	0,53	0,15	SCWXHT4324
SC-WAXHT	30	0,53	0,25	SCWXHT4325





Scharlab also offers liners, ferrules, manual syringes, auto-injector syringes... for gas chromatographs.

All GC accessories are brand and model specific to ensure perfect compatibility. You will find all the information in our website.

Contact helpdesk@scharlab.com for any query.



Scharlab also offers a wide range of analytical standard solutions to analyse environmental residues, pesticides, metabolites, deuterates, ¹³C-labelled compounds and others. We also offer the possibility to manufacture custom-made standard solutions.

All Scharlau organic standard solutions are certified according to ISO 17025 and ISO 17034. You will find them in our website.

Problems with the extraction method?
 Implementing a new extraction procedure?
 Implementing a new method?
 Problems with the column?

Scharlab offers chromatography
 helpdesk, contact us!
helpdesk@scharlab.com

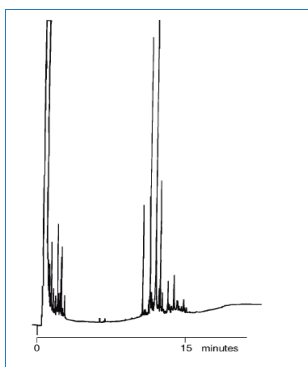
APPLICATION NOTE

Analysis of tocopherol
 isomer mixture



Part Number: SC51522031

Column Phase	SC-5	Final temperature	330°C, 5 min
Column Dimensions	15 m x 0.32 mm x 0.25 µm	Carrier gas	He, 7 psi
Initial temperature	70°C, 1 min	Detector	FID, 340 °C
Rate 1	25°C/min to 280°C	Injection mode	Cool on-column (COI-S)
Rate 2	5°C/min to 330°C	Injection volume	0.5 µL



scharlab.com · helpdesk@scharlab.com

Scharlab The Lab Sourcing Group

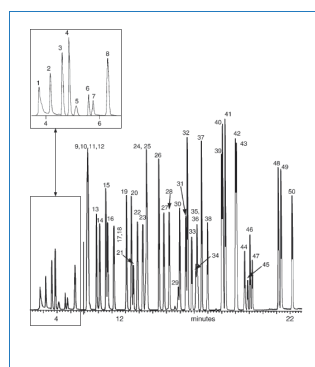
APPLICATION NOTE

Analysis of volatiles from
 drinking water



Part Number:

Column Phase	SC-624	Final temperature	210°C, 1 min
Column Dimensions	50 m x 0.53 mm x 3 µm	Carrier gas	He, 10 mL/min
Initial temperature	35°C, 2 min	Detector	MS
Rate 1	8°C/min to 180°C, 5 min	Injection mode	Purge and trap
Rate 2	15°C/min to 210°C		



scharlab.com · helpdesk@scharlab.com

Scharlab The Lab Sourcing Group

Scharlab S.L.

Gato Pérez, 33. Pol. Ind. Mas d'en Cisa.
08181 Sentmenat, Barcelona, Spain
Tel.: +34 93 715 19 40 - Fax: +34 93 715 27 65
E-mail: helpdesk@scharlab.com

Scharlab Italia S.r.l.

Via Massimo D'Azeglio 20
26900 LODI (LO)
Tel.: +39 02 9823 0679
E-mail: customerservice@scharlab.it

Scharlab Philippines, Inc.

4/F Unit K, No. 35 Sto. Niño Street corner Roosevelt Ave.
Barangay San Antonio, Quezon City 1105, Philippines.
Tel. - Fax: + 63 2 529 5726
E-mail: infophilippines@scharlab.ph



F-GCCENG22

Visit our website

