



The wise choice

KromaPhase Core-Shell

Columns with Superficially Porous
Particles (SPPs)



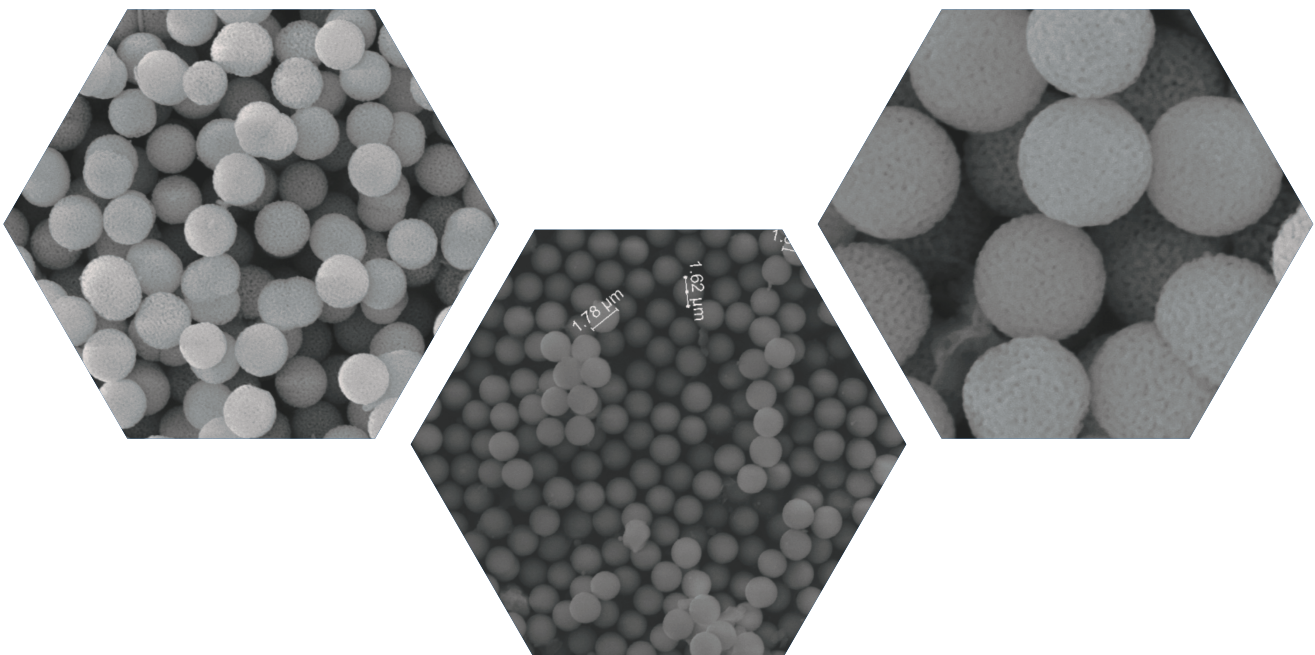
KromaPhase Core-Shell

Scharlab completes its HPLC chromatography portfolio with KromaPhase Core-Shell columns with Superficially Porous Particles (SPPs). SPPs are also called core-shell, fused core-shell, partially porous, pellicular, or solid-core. These particles are made of a solid, nonporous, impermeable silica centre surrounded by a porous shell layer with similar properties to those of fully porous materials. There is an optimum ratio between the core and the shell. We control that ratio, and it may vary between application and processes.

Scharlab's Kromaphase Core-Shell Technology results in less band broadening and results in chromatographic separations with enhanced resolution, higher sensitivity and improved peak capacities.

For core-shell porous, we have full and optimised control over physical properties and surface chemistry. This includes:

- pore size
- particles size
- pore volume
- particle size distribution
- density
- core porosity ratio for SPP





| Stationary Phase | Chemical Structure | End-capped | USP Code |
|-----------------------------------|--------------------|------------|----------|
| C18 C18 Plus | | Yes | L1 |
| C8 | | Yes | L7 |
| C4 | | Yes | L26 |
| Phenyl Hexyl Phenyl Hexyl Plus | | Yes | L11 |
| PFP (Pentafluorophenyl) | | Yes | L43 |
| Cyano | | Yes | L10 |
| BiPhenyl | | Yes | L11 |



Ensuring complete product provenance was important to us and our values. We have honed packing technology to ensure the production of accurate, reliable and reproducible columns time after time.

Each column is tested after manufacture for efficiency, capacity, selectivity and peak symmetry. The test results are shown in the Test Chromatogram, which is attached with each column.

Scharlau KromaPhase Core-Shell columns offer a wide range of possibilities. The portfolio includes more than 200 columns and pre-columns with different silica functionalisation, internal diameter and dimensions.

Furthermore, we want to support the development of applications for niche analytes, and we have the knowledge to develop a custom-made column for your requirements. Please contact us for more information about custom-made columns.

Stationary Phase C18

| Phase | Pore Size | Particle Size | Inner Ø | Length | U. | Part Number | |
|-------|-----------|---------------|---------|------------|------------|-------------|------------|
| C18 | 100A | 1,7µm | 2,1mm | 50mm | 1 | PC18C12150 | |
| | | | | 100mm | 1 | PC18C12110 | |
| | | | | 150mm | 1 | PC18C12115 | |
| | | 1,7µm | 3,0mm | 50mm | 1 | PC18C13050 | |
| | | | | 100mm | 1 | PC18C13010 | |
| | | | | 150mm | 1 | PC18C13015 | |
| | | 1,7µm | 4,6mm | 50mm | 1 | PC18C13025 | |
| | | | | 100mm | 1 | PC18C14650 | |
| | | | | 150mm | 1 | PC18C14610 | |
| | | 1,7µm | 4,6mm | 150mm | 1 | PC18C14615 | |
| | | | | 250mm | 1 | PC18C14625 | |
| | | | | 50mm | 1 | PC18C14650 | |
| | | 100A | 2,6µm | 2,1mm | 50mm | 1 | PC18C22150 |
| | | | | | 100mm | 1 | PC18C22110 |
| | | | | | 150mm | 1 | PC18C22115 |
| | 2,6µm | | 3,0mm | 50mm | 1 | PC18C23050 | |
| | | | | 100mm | 1 | PC18C23010 | |
| | | | | 150mm | 1 | PC18C23015 | |
| | 2,6µm | | 3,0mm | 250mm | 1 | PC18C23025 | |
| | | | | 50mm | 1 | PC18C24650 | |
| | | | | 100mm | 1 | PC18C24610 | |
| | 2,6µm | | 4,6mm | 150mm | 1 | PC18C24615 | |
| | | | | 250mm | 1 | PC18C24625 | |
| | | | | 50mm | 1 | PC18C24650 | |
| | 300A | | 1,7µm | 2,1mm | 50mm | 1 | PC18T12150 |
| | | | | | 100mm | 1 | PC18T12110 |
| | | | | | 150mm | 1 | PC18T12115 |
| | | 1,7µm | | 3,0mm | 50mm | 1 | PC18T13050 |
| | | | | | 100mm | 1 | PC18T13010 |
| | | | | | 150mm | 1 | PC18T13015 |
| 1,7µm | | 3,0mm | 250mm | 1 | PC18T13025 | | |
| | | | 2,6µm | 2,1mm | 50mm | 1 | PC18T22150 |
| | | | | | 100mm | 1 | PC18T22110 |
| 150mm | | 1 | | | PC18T22115 | | |
| 2,6µm | | 3,0mm | 50mm | 1 | PC18T23050 | | |
| | | | 100mm | 1 | PC18T23010 | | |
| | | | 150mm | 1 | PC18T23015 | | |
| 2,6µm | | 3,0mm | 250mm | 1 | PC18T23025 | | |
| | | | 1000A | 1,7µm | 2,1mm | 50mm | 1 |
| | 100mm | | | | | 1 | PC18M12110 |
| 150mm | 1 | PC18M12115 | | | | | |
| 1,7µm | 3,0mm | 50mm | | 1 | PC18M13050 | | |
| | | 100mm | | 1 | PC18M13010 | | |
| | | 150mm | | 1 | PC18M13015 | | |
| 1,7µm | 3,0mm | 250mm | 1 | PC18M13025 | | | |
| | | 2,6µm | 2,1mm | 50mm | 1 | PC18M22150 | |
| | | | | 100mm | 1 | PC18M22110 | |
| 150mm | 1 | | | PC18M22115 | | | |
| 2,6µm | 3,0mm | 50mm | 1 | PC18M23050 | | | |
| | | 100mm | 1 | PC18M23010 | | | |
| | | 150mm | 1 | PC18M23015 | | | |
| 2,6µm | 3,0mm | 250mm | 1 | PC18M23025 | | | |

Stationary Phase C18+

| Phase | Pore Size | Particle Size | Inner Ø | Length | U. | Part Number | |
|-------|-----------|---------------|------------|------------|------------|-------------|------------|
| C18+ | 100A | 1,7µm | 2,1mm | 50mm | 1 | P18PC12150 | |
| | | | | 100mm | 1 | P18PC12110 | |
| | | | | 150mm | 1 | P18PC12115 | |
| | | | 3,0mm | 50mm | 1 | P18PC13050 | |
| | | | | 100mm | 1 | P18PC13010 | |
| | | | | 150mm | 1 | P18PC13015 | |
| | | | 250mm | 1 | P18PC13025 | | |
| | | | | 4,6mm | 50mm | 1 | P18PC14650 |
| | | | | | 100mm | 1 | P18PC14610 |
| | | 150mm | 1 | | P18PC14615 | | |
| | | 250mm | 1 | P18PC14625 | | | |
| | | | 2,1mm | 50mm | 1 | P18PC22150 | |
| | | | | 100mm | 1 | P18PC22110 | |
| | | 150mm | | 1 | P18PC22115 | | |
| | | 3,0mm | 50mm | 1 | P18PC23050 | | |
| | | | 100mm | 1 | P18PC23010 | | |
| | | | 150mm | 1 | P18PC23015 | | |
| | | 250mm | 1 | P18PC23025 | | | |
| | | | 4,6mm | 50mm | 1 | P18PC24650 | |
| | | | | 100mm | 1 | P18PC24610 | |
| | | 150mm | | 1 | P18PC24615 | | |
| | | 250mm | 1 | P18PC24625 | | | |
| | | | 1,7µm | 2,1mm | 50mm | 1 | P18PT12150 |
| | | | | | 100mm | 1 | P18PT12110 |
| | 150mm | 1 | | | P18PT12115 | | |
| | 3,0mm | 50mm | 1 | P18PT13050 | | | |
| | | 100mm | 1 | P18PT13010 | | | |
| | | 150mm | 1 | P18PT13015 | | | |
| | 250mm | 1 | P18PT13025 | | | | |
| | | 2,1mm | 50mm | 1 | P18PT22150 | | |
| | | | 100mm | 1 | P18PT22110 | | |
| | 150mm | | 1 | P18PT22115 | | | |
| | 3,0mm | 50mm | 1 | P18PT23050 | | | |
| | | 100mm | 1 | P18PT23010 | | | |
| | | 150mm | 1 | P18PT23015 | | | |
| | 250mm | 1 | P18PT23025 | | | | |
| | | 1,7µm | 2,1mm | 50mm | 1 | P18PM12150 | |
| | | | | 100mm | 1 | P18PM12110 | |
| | 150mm | | | 1 | P18PM12115 | | |
| | 3,0mm | 50mm | 1 | P18PM13050 | | | |
| | | 100mm | 1 | P18PM13010 | | | |
| | | 150mm | 1 | P18PM13015 | | | |
| | 250mm | 1 | P18PM13025 | | | | |
| | | 2,1mm | 50mm | 1 | P18PM22150 | | |
| | | | 100mm | 1 | P18PM22110 | | |
| | 150mm | | 1 | P18PM22115 | | | |
| | 3,0mm | 50mm | 1 | P18PM23050 | | | |
| | | 100mm | 1 | P18PM23010 | | | |
| 150mm | | 1 | P18PM23015 | | | | |
| 250mm | 1 | P18PM23025 | | | | | |

Stationary Phase C4

| Phase | Pore Size | Particle Size | Inner Ø | Length | U. | Part Number | |
|-------|-----------|---------------|------------|------------|------------|-------------|------------|
| C4 | 100A | 1,7µm | 2,1mm | 50mm | 1 | P0C4C12150 | |
| | | | | 100mm | 1 | P0C4C12110 | |
| | | | | 150mm | 1 | P0C4C12115 | |
| | | | 3,0mm | 50mm | 1 | P0C4C13050 | |
| | | | | 100mm | 1 | P0C4C13010 | |
| | | | | 150mm | 1 | P0C4C13015 | |
| | | | 250mm | 1 | P0C4C13025 | | |
| | | | | 4,6mm | 50mm | 1 | P0C4C14650 |
| | | | | | 100mm | 1 | P0C4C14610 |
| | | 150mm | 1 | | P0C4C14615 | | |
| | | 250mm | 1 | P0C4C14625 | | | |
| | | | 2,1mm | 100mm | 1 | P0C4C22110 | |
| | | | | 150mm | 1 | P0C4C22115 | |
| | | 3,0mm | | 50mm | 1 | P0C4C23050 | |
| | | | 100mm | 1 | P0C4C23010 | | |
| | | | 150mm | 1 | P0C4C23015 | | |
| | | 250mm | 1 | P0C4C23025 | | | |
| | | | 4,6mm | 50mm | 1 | P0C4C24650 | |
| | | | | 100mm | 1 | P0C4C24610 | |
| | | 150mm | | 1 | P0C4C24615 | | |
| | | 250mm | 1 | P0C4C24625 | | | |
| | | | 1,7µm | 2,1mm | 50mm | 1 | P0C4T12150 |
| | | | | | 100mm | 1 | P0C4T12110 |
| | | 150mm | | | 1 | P0C4T12115 | |
| | 3,0mm | 50mm | 1 | P0C4T13050 | | | |
| | | 100mm | 1 | P0C4T13010 | | | |
| | | 150mm | 1 | P0C4T13015 | | | |
| | 250mm | 1 | P0C4T13025 | | | | |
| | | 2,1mm | 50mm | 1 | P0C4T22150 | | |
| | | | 100mm | 1 | P0C4T22110 | | |
| | 150mm | | 1 | P0C4T22115 | | | |
| | 3,0mm | 50mm | 1 | P0C4T23050 | | | |
| | | 100mm | 1 | P0C4T23010 | | | |
| | | 150mm | 1 | P0C4T23015 | | | |
| | 250mm | 1 | P0C4T23025 | | | | |
| | | 1,7µm | 2,1mm | 50mm | 1 | P0C4M12150 | |
| | | | | 100mm | 1 | P0C4M12110 | |
| | 150mm | | | 1 | P0C4M12115 | | |
| | 3,0mm | 50mm | 1 | P0C4M13050 | | | |
| | | 100mm | 1 | P0C4M13010 | | | |
| | | 150mm | 1 | P0C4M13015 | | | |
| | 250mm | 1 | P0C4M13025 | | | | |
| | | 2,1mm | 50mm | 1 | P0C4M22150 | | |
| | | | 100mm | 1 | P0C4M22110 | | |
| | 150mm | | 1 | P0C4M22115 | | | |
| | 3,0mm | 50mm | 1 | P0C4M23050 | | | |
| | | 100mm | 1 | P0C4M23010 | | | |
| | | 150mm | 1 | P0C4M23015 | | | |
| 250mm | 1 | P0C4M23025 | | | | | |

Stationary Phase C8

| Phase | Pore Size | Particle Size | Inner Ø | Length | U. | Part Number | |
|-----------|-----------|---------------|------------|------------|------------|-------------|------------|
| C8 | 100A | 1,7µm | 2,1mm | 50mm | 1 | P0C8C12150 | |
| | | | | 100mm | 1 | P0C8C12110 | |
| | | | | 150mm | 1 | P0C8C12115 | |
| | | | 3,0mm | 50mm | 1 | P0C8C13050 | |
| | | | | 100mm | 1 | P0C8C13010 | |
| | | | | 150mm | 1 | P0C8C13015 | |
| | | | 250mm | 1 | P0C8C13025 | | |
| | | | | 4,6mm | 50mm | 1 | P0C8C14650 |
| | | | | | 100mm | 1 | P0C8C14610 |
| | | 150mm | 1 | | P0C8C14615 | | |
| | | 250mm | 1 | P0C8C14625 | | | |
| | | | 2,1mm | 50mm | 1 | P0C8C22150 | |
| | | | | 100mm | 1 | P0C8C22110 | |
| | | 150mm | | 1 | P0C8C22115 | | |
| | | 2,6µm | 3,0mm | 50mm | 1 | P0C8C23050 | |
| | | | | 100mm | 1 | P0C8C23010 | |
| | | | | 150mm | 1 | P0C8C23015 | |
| | | | 250mm | 1 | P0C8C23025 | | |
| | | | | 4,6mm | 50mm | 1 | P0C8C24650 |
| | | | | | 100mm | 1 | P0C8C24610 |
| | | | 150mm | | 1 | P0C8C24615 | |
| | | | 250mm | 1 | P0C8C24625 | | |
| | | | | 1,7µm | 2,1mm | 50mm | 1 |
| | | 100mm | | | | 1 | P0C8T12110 |
| | 150mm | 1 | P0C8T12115 | | | | |
| | 300A | 3,0mm | 50mm | 1 | P0C8T13050 | | |
| | | | 100mm | 1 | P0C8T13010 | | |
| | | | 150mm | 1 | P0C8T13015 | | |
| | | 250mm | 1 | P0C8T13025 | | | |
| | | | 2,1mm | 50mm | 1 | P0C8T22150 | |
| | | | | 100mm | 1 | P0C8T22110 | |
| | | 150mm | | 1 | P0C8T22115 | | |
| | | 2,6µm | 3,0mm | 50mm | 1 | P0C8T23050 | |
| | | | | 100mm | 1 | P0C8T23010 | |
| | 150mm | | | 1 | P0C8T23015 | | |
| | 250mm | | 1 | P0C8T23025 | | | |
| | | | 1,7µm | 2,1mm | 50mm | 1 | P0C8M12150 |
| | | | | | 100mm | 1 | P0C8M12110 |
| | 150mm | | | | 1 | P0C8M12115 | |
| | 1000A | | 3,0mm | 50mm | 1 | P0C8M13050 | |
| | | | | 100mm | 1 | P0C8M13010 | |
| | | 150mm | | 1 | P0C8M13015 | | |
| | | 250mm | 1 | P0C8M13025 | | | |
| | | | 2,1mm | 50mm | 1 | P0C8M22150 | |
| | | | | 100mm | 1 | P0C8M22110 | |
| | | 150mm | | 1 | P0C8M22115 | | |
| | | 2,6µm | 3,0mm | 50mm | 1 | P0C8M23050 | |
| | | | | 100mm | 1 | P0C8M23010 | |
| 150mm | 1 | | | P0C8M23015 | | | |
| 250mm | 1 | | P0C8M23025 | | | | |

Stationary Phase CN

| Phase | Pore Size | Particle Size | Inner Ø | Length | U. | Part Number | |
|-----------|-----------|---------------|------------|------------|------------|-------------|------------|
| CN | 100A | 1,7µm | 2,1mm | 50mm | 1 | P0CNC12150 | |
| | | | | 100mm | 1 | P0CNC12110 | |
| | | | | 150mm | 1 | P0CNC12115 | |
| | | | 3,0mm | 50mm | 1 | P0CNC13050 | |
| | | | | 100mm | 1 | P0CNC13010 | |
| | | | | 150mm | 1 | P0CNC13015 | |
| | | | 250mm | 1 | P0CNC13025 | | |
| | | | | 4,6mm | 50mm | 1 | P0CNC14650 |
| | | | | | 100mm | 1 | P0CNC14610 |
| | | 150mm | 1 | | P0CNC14615 | | |
| | | 250mm | 1 | P0CNC14625 | | | |
| | | | 2,1mm | 50mm | 1 | P0CNC22150 | |
| | | | | 100mm | 1 | P0CNC22110 | |
| | | 150mm | | 1 | P0CNC22115 | | |
| | | 2,6µm | 3,0mm | 50mm | 1 | P0CNC23050 | |
| | | | | 100mm | 1 | P0CNC23010 | |
| | | | | 150mm | 1 | P0CNC23015 | |
| | | | 250mm | 1 | P0CNC23025 | | |
| | | | | 4,6mm | 50mm | 1 | P0CNC24650 |
| | | | | | 100mm | 1 | P0CNC24610 |
| | | | 150mm | | 1 | P0CNC24615 | |
| | | | 250mm | 1 | P0CNC24625 | | |
| | | | | 1,7µm | 2,1mm | 50mm | 1 |
| | | 100mm | | | | 1 | P0CNT12110 |
| | 150mm | 1 | P0CNT12115 | | | | |
| | 300A | 3,0mm | 50mm | 1 | P0CNT13050 | | |
| | | | 100mm | 1 | P0CNT13010 | | |
| | | | 150mm | 1 | P0CNT13015 | | |
| | | 250mm | 1 | P0CNT13025 | | | |
| | | | 2,1mm | 50mm | 1 | P0CNT22150 | |
| | | | | 100mm | 1 | P0CNT22110 | |
| | | 150mm | | 1 | P0CNT22115 | | |
| | | 2,6µm | 3,0mm | 50mm | 1 | P0CNT23050 | |
| | | | | 100mm | 1 | P0CNT23010 | |
| | 150mm | | | 1 | P0CNT23015 | | |
| | 250mm | | 1 | P0CNT23025 | | | |
| | | | 1,7µm | 2,1mm | 50mm | 1 | P0CNM12150 |
| | | | | | 100mm | 1 | P0CNM12110 |
| | 150mm | | | | 1 | P0CNM12115 | |
| | 1000A | | 3,0mm | 50mm | 1 | P0CNM13050 | |
| | | | | 100mm | 1 | P0CNM13010 | |
| | | 150mm | | 1 | P0CNM13015 | | |
| | | 250mm | 1 | P0CNM13025 | | | |
| | | | 2,1mm | 50mm | 1 | P0CNM22150 | |
| | | | | 100mm | 1 | P0CNM22110 | |
| | | 150mm | | 1 | P0CNM22115 | | |
| | | 2,6µm | 3,0mm | 50mm | 1 | P0CNM23050 | |
| | | | | 100mm | 1 | P0CNM23010 | |
| 150mm | 1 | | | P0CNM23015 | | | |
| 250mm | 1 | | P0CNM23025 | | | | |

Stationary Phase BP

| Phase | Pore Size | Particle Size | Inner Ø | Length | U. | Part Number | | |
|-----------|-----------|---------------|---------|--------|------------|-------------|------------|------------|
| BP | 100A | 1,7µm | 2,1mm | 50mm | 1 | P0CNC12150 | | |
| | | | | 100mm | 1 | P0CNC12110 | | |
| | | | | 150mm | 1 | P0CNC12115 | | |
| | | | 3,0mm | 50mm | 1 | P0CNC13050 | | |
| | | | | 100mm | 1 | P0CNC13010 | | |
| | | | | 150mm | 1 | P0CNC13015 | | |
| | | | | 250mm | 1 | P0CNC13025 | | |
| | | | | 4,6mm | 50mm | 1 | P0CNC14650 | |
| | | | | | 100mm | 1 | P0CNC14610 | |
| | | 150mm | 1 | | P0CNC14615 | | | |
| | | 250mm | 1 | | P0CNC14625 | | | |
| | | 2,6µm | 2,1mm | | 50mm | 1 | P0CNC22150 | |
| | | | | | 100mm | 1 | P0CNC22110 | |
| | | | | 150mm | 1 | P0CNC22115 | | |
| | | | 3,0mm | 50mm | 1 | P0CNC23050 | | |
| | | | | 100mm | 1 | P0CNC23010 | | |
| | | | | 150mm | 1 | P0CNC23015 | | |
| | | | | 250mm | 1 | P0CNC23025 | | |
| | | | | 4,6mm | 50mm | 1 | P0CNC24650 | |
| | | | | | 100mm | 1 | P0CNC24610 | |
| | | 150mm | 1 | | P0CNC24615 | | | |
| | | 250mm | 1 | | P0CNC24625 | | | |
| | | 300A | 1,7µm | | 2,1mm | 50mm | 1 | P0CNT12150 |
| | | | | | | 100mm | 1 | P0CNT12110 |
| | 150mm | | | 1 | | P0CNT12115 | | |
| | 3,0mm | | | 50mm | 1 | P0CNT13050 | | |
| | | | | 100mm | 1 | P0CNT13010 | | |
| | | | | 150mm | 1 | P0CNT13015 | | |
| | 2,6µm | | 2,1mm | 50mm | 1 | P0CNT22150 | | |
| | | | | 100mm | 1 | P0CNT22110 | | |
| | | | | 150mm | 1 | P0CNT22115 | | |
| | | | 3,0mm | 50mm | 1 | P0CNT23050 | | |
| | | | | 100mm | 1 | P0CNT23010 | | |
| | | | | 150mm | 1 | P0CNT23015 | | |
| | 1000A | 1,7µm | 2,1mm | 50mm | 1 | P0CNM12150 | | |
| | | | | 100mm | 1 | P0CNM12110 | | |
| | | | | 150mm | 1 | P0CNM12115 | | |
| | | | 3,0mm | 50mm | 1 | P0CNM13050 | | |
| | | | | 100mm | 1 | P0CNM13010 | | |
| | | | | 150mm | 1 | P0CNM13015 | | |
| | | | | 250mm | 1 | P0CNM13025 | | |
| | | | | 2,6µm | 2,1mm | 50mm | 1 | P0CNM22150 |
| | | | | | | 100mm | 1 | P0CNM22110 |
| | | 150mm | 1 | | | P0CNM22115 | | |
| | | 3,0mm | 50mm | | 1 | P0CNM23050 | | |
| | | | 100mm | | 1 | P0CNM23010 | | |
| | | | 150mm | | 1 | P0CNM23015 | | |
| | | | 250mm | | 1 | P0CNM23025 | | |

Stationary Phase PFP

| Phase | Pore Size | Particle Size | Inner Ø | Length | U. | Part Number | | |
|------------|-----------|---------------|---------|--------|------------|-------------|------------|------------|
| PFP | 100A | 1,7µm | 2,1mm | 50mm | 1 | PPFPC12150 | | |
| | | | | 100mm | 1 | PPFPC12110 | | |
| | | | | 150mm | 1 | PPFPC12115 | | |
| | | | 3,0mm | 50mm | 1 | PPFPC13050 | | |
| | | | | 100mm | 1 | PPFPC13010 | | |
| | | | | 150mm | 1 | PPFPC13015 | | |
| | | | | 250mm | 1 | PPFPC13025 | | |
| | | | | 4,6mm | 50mm | 1 | PPFPC14650 | |
| | | | | | 100mm | 1 | PPFPC14610 | |
| | | 150mm | 1 | | PPFPC14615 | | | |
| | | 250mm | 1 | | PPFPC14625 | | | |
| | | 2,6µm | 2,1mm | | 50mm | 1 | PPFPC22150 | |
| | | | | | 100mm | 1 | PPFPC22110 | |
| | | | | 150mm | 1 | PPFPC22115 | | |
| | | | 3,0mm | 50mm | 1 | PPFPC23050 | | |
| | | | | 100mm | 1 | PPFPC23010 | | |
| | | | | 150mm | 1 | PPFPC23015 | | |
| | | | | 250mm | 1 | PPFPC23025 | | |
| | | | | 4,6mm | 50mm | 1 | PPFPC24650 | |
| | | | | | 100mm | 1 | PPFPC24610 | |
| | | 150mm | 1 | | PPFPC24615 | | | |
| | | 250mm | 1 | | PPFPC24625 | | | |
| | | 300A | 1,7µm | | 2,1mm | 50mm | 1 | PPFPT12150 |
| | | | | | | 100mm | 1 | PPFPT12110 |
| | 150mm | | | 1 | | PPFPT12115 | | |
| | 3,0mm | | | 50mm | 1 | PPFPT13050 | | |
| | | | | 100mm | 1 | PPFPT13010 | | |
| | | | | 150mm | 1 | PPFPT13015 | | |
| | 2,6µm | | 2,1mm | 50mm | 1 | PPFPT22150 | | |
| | | | | 100mm | 1 | PPFPT22110 | | |
| | | | | 150mm | 1 | PPFPT22115 | | |
| | | | 3,0mm | 50mm | 1 | PPFPT23050 | | |
| | | | | 100mm | 1 | PPFPT23010 | | |
| | | | | 150mm | 1 | PPFPT23015 | | |
| | 1000A | 1,7µm | 2,1mm | 50mm | 1 | PPFPM12150 | | |
| | | | | 100mm | 1 | PPFPM12110 | | |
| | | | | 150mm | 1 | PPFPM12115 | | |
| | | | 3,0mm | 50mm | 1 | PPFPM13050 | | |
| | | | | 100mm | 1 | PPFPM13010 | | |
| | | | | 150mm | 1 | PPFPM13015 | | |
| | | | | 250mm | 1 | PPFPM13025 | | |
| | | | | 2,6µm | 2,1mm | 50mm | 1 | PPFPM22150 |
| | | | | | | 100mm | 1 | PPFPM22110 |
| | | 150mm | 1 | | | PPFPM22115 | | |
| | | 3,0mm | 50mm | | 1 | PPFPM23050 | | |
| | | | 100mm | | 1 | PPFPM23010 | | |
| | | | 150mm | | 1 | PPFPM23015 | | |
| | | | 250mm | | 1 | PPFPM23025 | | |

Stationary Phase PH

| Phase | Pore Size | Particle Size | Inner Ø | Length | U. | Part Number | |
|-----------|-----------|---------------|------------|------------|------------|-------------|------------|
| PH | 100A | 1,7µm | 2,1mm | 50mm | 1 | P0PHC12150 | |
| | | | | 100mm | 1 | P0PHC12110 | |
| | | | | 150mm | 1 | P0PHC12115 | |
| | | | 3,0mm | 50mm | 1 | P0PHC13050 | |
| | | | | 100mm | 1 | P0PHC13010 | |
| | | | | 150mm | 1 | P0PHC13015 | |
| | | | 250mm | 250mm | 1 | P0PHC13025 | |
| | | | | 4,6mm | 50mm | 1 | P0PHC14650 |
| | | | | | 100mm | 1 | P0PHC14610 |
| | | 150mm | 1 | | P0PHC14615 | | |
| | | 250mm | 250mm | 1 | P0PHC14625 | | |
| | | | 2,1mm | 50mm | 1 | P0PHC22150 | |
| | | | | 100mm | 1 | P0PHC22110 | |
| | | 150mm | | 1 | P0PHC22115 | | |
| | | 3,0mm | 50mm | 1 | P0PHC23050 | | |
| | | | 100mm | 1 | P0PHC23010 | | |
| | | | 150mm | 1 | P0PHC23015 | | |
| | | 250mm | 250mm | 1 | P0PHC23025 | | |
| | | | 4,6mm | 50mm | 1 | P0PHC24650 | |
| | | | | 100mm | 1 | P0PHC24610 | |
| | | 150mm | | 1 | P0PHC24615 | | |
| | | 250mm | 250mm | 1 | P0PHC24625 | | |
| | | | 1,7µm | 2,1mm | 50mm | 1 | P0PHT12150 |
| | | | | | 100mm | 1 | P0PHT12110 |
| | 150mm | 1 | | | P0PHT12115 | | |
| | 3,0mm | 50mm | 1 | P0PHT13050 | | | |
| | | 100mm | 1 | P0PHT13010 | | | |
| | | 150mm | 1 | P0PHT13015 | | | |
| | 250mm | 250mm | 1 | P0PHT13025 | | | |
| | | 2,1mm | 50mm | 1 | P0PHT22150 | | |
| | | | 100mm | 1 | P0PHT22110 | | |
| | 150mm | | 1 | P0PHT22115 | | | |
| | 3,0mm | 50mm | 1 | P0PHT23050 | | | |
| | | 100mm | 1 | P0PHT23010 | | | |
| | | 150mm | 1 | P0PHT23015 | | | |
| | 250mm | 250mm | 1 | P0PHT23025 | | | |
| | | 1,7µm | 2,1mm | 50mm | 1 | P0PHM12150 | |
| | | | | 100mm | 1 | P0PHM12110 | |
| | 150mm | | | 1 | P0PHM12115 | | |
| | 3,0mm | 50mm | 1 | P0PHM13050 | | | |
| | | 100mm | 1 | P0PHM13010 | | | |
| | | 150mm | 1 | P0PHM13015 | | | |
| | 250mm | 250mm | 1 | P0PHM13025 | | | |
| | | 2,1mm | 50mm | 1 | P0PHM22150 | | |
| | | | 100mm | 1 | P0PHM22110 | | |
| | 150mm | | 1 | P0PHM22115 | | | |
| | 3,0mm | 50mm | 1 | P0PHM23050 | | | |
| | | 100mm | 1 | P0PHM23010 | | | |
| 150mm | | 1 | P0PHM23015 | | | | |
| 250mm | 250mm | 1 | P0PHM23025 | | | | |

Stationary Phase PH+

| Phase | Pore Size | Particle Size | Inner Ø | Length | U. | Part Number | |
|------------|-----------|---------------|------------|------------|------------|-------------|------------|
| PH+ | 100A | 1,7µm | 2,1mm | 50mm | 1 | PPHPC12150 | |
| | | | | 100mm | 1 | PPHPC12110 | |
| | | | | 150mm | 1 | PPHPC12115 | |
| | | | 3,0mm | 50mm | 1 | PPHPC13050 | |
| | | | | 100mm | 1 | PPHPC13010 | |
| | | | | 150mm | 1 | PPHPC13015 | |
| | | | 250mm | 250mm | 1 | PPHPC13025 | |
| | | | | 4,6mm | 50mm | 1 | PPHPC14650 |
| | | | | | 100mm | 1 | PPHPC14610 |
| | | 150mm | 1 | | PPHPC14615 | | |
| | | 250mm | 250mm | 1 | PPHPC14625 | | |
| | | | 2,1mm | 50mm | 1 | PPHPC22150 | |
| | | | | 100mm | 1 | PPHPC22110 | |
| | | 150mm | | 1 | PPHPC22115 | | |
| | | 3,0mm | 50mm | 1 | PPHPC23050 | | |
| | | | 100mm | 1 | PPHPC23010 | | |
| | | | 150mm | 1 | PPHPC23015 | | |
| | | 250mm | 250mm | 1 | PPHPC23025 | | |
| | | | 4,6mm | 50mm | 1 | PPHPC24650 | |
| | | | | 100mm | 1 | PPHPC24610 | |
| | | 150mm | | 1 | PPHPC24615 | | |
| | | 250mm | 250mm | 1 | PPHPC24625 | | |
| | | | 1,7µm | 2,1mm | 50mm | 1 | PPHPT12150 |
| | | | | | 100mm | 1 | PPHPT12110 |
| | 150mm | 1 | | | PPHPT12115 | | |
| | 3,0mm | 50mm | 1 | PPHPT13050 | | | |
| | | 100mm | 1 | PPHPT13010 | | | |
| | | 150mm | 1 | PPHPT13015 | | | |
| | 250mm | 250mm | 1 | PPHPT13025 | | | |
| | | 2,1mm | 50mm | 1 | PPHPT22150 | | |
| | | | 100mm | 1 | PPHPT22110 | | |
| | 150mm | | 1 | PPHPT22115 | | | |
| | 3,0mm | 50mm | 1 | PPHPT23050 | | | |
| | | 100mm | 1 | PPHPT23010 | | | |
| | | 150mm | 1 | PPHPT23015 | | | |
| | 250mm | 250mm | 1 | PPHPT23025 | | | |
| | | 1,7µm | 2,1mm | 50mm | 1 | PPHPM12150 | |
| | | | | 100mm | 1 | PPHPM12110 | |
| | 150mm | | | 1 | PPHPM12115 | | |
| | 3,0mm | 50mm | 1 | PPHPM13050 | | | |
| | | 100mm | 1 | PPHPM13010 | | | |
| | | 150mm | 1 | PPHPM13015 | | | |
| | 250mm | 250mm | 1 | PPHPM13025 | | | |
| | | 2,1mm | 50mm | 1 | PPHPM22150 | | |
| | | | 100mm | 1 | PPHPM22110 | | |
| | 150mm | | 1 | PPHPM22115 | | | |
| | 3,0mm | 50mm | 1 | PPHPM23050 | | | |
| | | 100mm | 1 | PPHPM23010 | | | |
| 150mm | | 1 | PPHPM23015 | | | | |
| 250mm | 250mm | 1 | PPHPM23025 | | | | |

Guard cartridges, 5mm

| Chemistry | Pore Size | Particle Size | Inner Ø | Pack | Scharlau ref | | |
|-----------|-------------|---------------|---------|------------|--------------|------------|------------|
| BP | 100A | 2,6um | 2,1mm | 3 | P0BPC221GC | | |
| | | | 3,0mm | 3 | P0BPC230GC | | |
| | | | 4,6mm | 3 | P0BPC246GC | | |
| | | 1,7um | 2,1mm | 3 | P0BPC121GC | | |
| | | | 3,0mm | 3 | P0BPC130GC | | |
| | | | 4,6mm | 3 | P0BPC146GC | | |
| | 300A | 2,6um | 2,1mm | 3 | P0BPT221GC | | |
| | | | 3,0mm | 3 | P0BPT230GC | | |
| | | | 2,1mm | 3 | P0BPT121GC | | |
| | | 1,7um | 3,0mm | 3 | P0BPT130GC | | |
| | | | 1000A | 2,6um | 2,1mm | 3 | P0BPM221GC |
| | | | | | 3,0mm | 3 | P0BPM230GC |
| 2,1mm | 3 | P0BPM121GC | | | | | |
| 1,7um | 3,0mm | 3 | | P0BPM130GC | | | |
| | C18 | 100A | | 2,6um | 2,1mm | 3 | PC18C221GC |
| | | | | | 3,0mm | 3 | PC18C230GC |
| 4,6mm | | | 3 | | PC18C246GC | | |
| 1,7um | | | 2,1mm | 3 | PC18C121GC | | |
| | | | 3,0mm | 3 | PC18C130GC | | |
| | | | 4,6mm | 3 | PC18C146GC | | |
| 300A | 2,6um | 2,1mm | 3 | PC18T221GC | | | |
| | | 3,0mm | 3 | PC18T230GC | | | |
| | | 2,1mm | 3 | PC18T121GC | | | |
| | 1,7um | 3,0mm | 3 | PC18T130GC | | | |
| | | 1000A | 2,6um | 2,1mm | 3 | PC18M221GC | |
| | | | | 3,0mm | 3 | PC18M230GC | |
| 2,1mm | 3 | | | PC18M121GC | | | |
| 1,7um | 3,0mm | | 3 | PC18M130GC | | | |
| | C18+ | | 100A | 2,6um | 2,1mm | 3 | P18PC221GC |
| | | | | | 3,0mm | 3 | P18PC230GC |
| 4,6mm | | 3 | | | P18PC246GC | | |
| 1,7um | | 2,1mm | | 3 | P18PC121GC | | |
| | | 3,0mm | | 3 | P18PC130GC | | |
| | | 4,6mm | | 3 | P18PC146GC | | |
| 300A | 2,6um | 2,1mm | 3 | P18PT221GC | | | |
| | | 3,0mm | 3 | P18PT230GC | | | |
| | | 2,1mm | 3 | P18PT121GC | | | |
| | 1,7um | 3,0mm | 3 | P18PT130GC | | | |
| | | 1000A | 2,6um | 2,1mm | 3 | P18PM221GC | |
| | | | | 3,0mm | 3 | P18PM230GC | |
| 2,1mm | 3 | | | P18PM121GC | | | |
| 1,7um | 3,0mm | | 3 | P18PM130GC | | | |

| Chemistry | Pore Size | Particle Size | Inner Ø | Pack | Scharlau ref | | |
|-----------|-----------|---------------|---------|------------|--------------|------------|------------|
| C4 | 100A | 2,6um | 2,1mm | 3 | P0C4C221GC | | |
| | | | 3,0mm | 3 | P0C4C230GC | | |
| | | | 4,6mm | 3 | P0C4C246GC | | |
| | | 1,7um | 2,1mm | 3 | P0C4C121GC | | |
| | | | 3,0mm | 3 | P0C4C130GC | | |
| | | | 4,6mm | 3 | P0C4C146GC | | |
| | 300A | 2,6um | 2,1mm | 3 | P0C4T221GC | | |
| | | | 3,0mm | 3 | P0C4T230GC | | |
| | | | 2,1mm | 3 | P0C4T121GC | | |
| | | 1,7um | 3,0mm | 3 | P0C4T130GC | | |
| | | | 1000A | 2,6um | 2,1mm | 3 | P0C4M221GC |
| | | | | | 3,0mm | 3 | P0C4M230GC |
| 2,1mm | 3 | P0C4M121GC | | | | | |
| 1,7um | 3,0mm | 3 | | P0C4M130GC | | | |
| | C8 | 100A | | 2,6um | 2,1mm | 3 | P0C8C221GC |
| | | | | | 3,0mm | 3 | P0C8C230GC |
| 4,6mm | | | 3 | | P0C8C246GC | | |
| 1,7um | | | 2,1mm | 3 | P0C8C121GC | | |
| | | | 3,0mm | 3 | P0C8C130GC | | |
| | | | 4,6mm | 3 | P0C8C146GC | | |
| 300A | 2,6um | 2,1mm | 3 | P0C8T221GC | | | |
| | | 3,0mm | 3 | P0C8T230GC | | | |
| | | 2,1mm | 3 | P0C8T121GC | | | |
| | 1,7um | 3,0mm | 3 | P0C8T130GC | | | |
| | | 1000A | 2,6um | 2,1mm | 3 | P0C8M221GC | |
| | | | | 3,0mm | 3 | P0C8M230GC | |
| 2,1mm | 3 | | | P0C8M121GC | | | |
| 1,7um | 3,0mm | | 3 | P0C8M130GC | | | |
| | CN | | 100A | 2,6um | 2,1mm | 3 | P0CNC221GC |
| | | | | | 3,0mm | 3 | P0CNC230GC |
| 4,6mm | | 3 | | | P0CNC246GC | | |
| 1,7um | | 2,1mm | | 3 | P0CNC121GC | | |
| | | 3,0mm | | 3 | P0CNC130GC | | |
| | | 4,6mm | | 3 | P0CNC146GC | | |
| 300A | 2,6um | 2,1mm | 3 | P0CNT221GC | | | |
| | | 3,0mm | 3 | P0CNT230GC | | | |
| | | 2,1mm | 3 | P0CNT121GC | | | |
| | 1,7um | 3,0mm | 3 | P0CNT130GC | | | |
| | | 1000A | 2,6um | 2,1mm | 3 | P0CNM221GC | |
| | | | | 3,0mm | 3 | P0CNM230GC | |
| 2,1mm | 3 | | | P0CNM121GC | | | |
| 1,7um | 3,0mm | | 3 | P0CNM130GC | | | |

Guard cartridges, 5mm

| Chemistry | Pore Size | Particle Size | Inner Ø | Pack | Scharlau ref |
|------------|-----------|---------------|---------|-------|--------------|
| PFP | 100A | 2,6um | 2,1mm | 3 | PPFPC221GC |
| | | | 3,0mm | 3 | PPFPC230GC |
| | | | 4,6mm | 3 | PPFPC246GC |
| | | 1,7um | 2,1mm | 3 | PPFPC121GC |
| | | | 3,0mm | 3 | PPFPC130GC |
| | | | 4,6mm | 3 | PPFPC146GC |
| | 300A | 2,6um | 2,1mm | 3 | PPFPT221GC |
| | | | 3,0mm | 3 | PPFPT230GC |
| | | 1,7um | 2,1mm | 3 | PPFPT121GC |
| | | | 3,0mm | 3 | PPFPT130GC |
| | 1000A | 2,6um | 2,1mm | 3 | PPFPM221GC |
| | | | 3,0mm | 3 | PPFPM230GC |
| | | 1,7um | 2,1mm | 3 | PPFPM121GC |
| | | | 3,0mm | 3 | PPFPM130GC |
| | PH | 100A | 2,6um | 2,1mm | 3 |
| 3,0mm | | | | 3 | P0PHC230GC |
| 4,6mm | | | | 3 | P0PHC246GC |
| 1,7um | | | 2,1mm | 3 | P0PHC121GC |
| | | | 3,0mm | 3 | P0PHC130GC |
| | | | 4,6mm | 3 | P0PHC146GC |
| 300A | | 2,6um | 2,1mm | 3 | P0PHT221GC |
| | | | 3,0mm | 3 | P0PHT230GC |
| | | 1,7um | 2,1mm | 3 | P0PHT121GC |
| | | | 3,0mm | 3 | P0PHT130GC |
| 1000A | | 2,6um | 2,1mm | 3 | P0PHM221GC |
| | | | 3,0mm | 3 | P0PHM230GC |
| | | 1,7um | 2,1mm | 3 | P0PHM121GC |
| | | | 3,0mm | 3 | P0PHM130GC |

| Chemistry | Pore Size | Particle Size | Inner Ø | Pack | Scharlau ref |
|------------|-----------|---------------|---------|------------|--------------|
| PH+ | 100A | 2,6um | 2,1mm | 3 | PPHPC221GC |
| | | | 3,0mm | 3 | PPHPC230GC |
| | | | 4,6mm | 3 | PPHPC246GC |
| | | 1,7um | 2,1mm | 3 | PPHPC121GC |
| | | | 3,0mm | 3 | PPHPC130GC |
| | | | 4,6mm | 3 | PPHPC146GC |
| | 300A | 2,6um | 2,1mm | 3 | PPHPT221GC |
| | | | 3,0mm | 3 | PPHPT230GC |
| | | 1,7um | 2,1mm | 3 | PPHPT121GC |
| | | | 3,0mm | 3 | PPHPT130GC |
| | 1000A | 2,6um | 2,1mm | 3 | PPHPM221GC |
| | | | 3,0mm | 3 | PPHPM230GC |
| 1,7um | | 2,1mm | 3 | PPHPM121GC | |
| | | 3,0mm | 3 | PPHPM130GC | |

Scharlab S.L.

Gato Pérez, 33. Pol. Ind. Mas d'en Cisa.
08181 Sentmenat, Barcelona, Spain
Tel.: +34 93 715 19 40 - Fax: +34 93 715 27 65
E-mail: helpdesk@scharlab.com

Scharlab Italia S.r.l.

Via Massimo D'Azeglio 20
26900 LODI (LO)
Tel.: +39 02 9823 0679
E-mail: customerservice@scharlab.it

Scharlab Philippines, Inc.

4/F Unit K, No. 35 Sto. Niño Street corner Roosevelt Ave.
Barangay San Antonio, Quezon City 1105, Philippines.
Tel. - Fax: + 63 2 529 5726
E-mail: infophilippines@scharlab.ph



F-COOREN22

Visit our website

